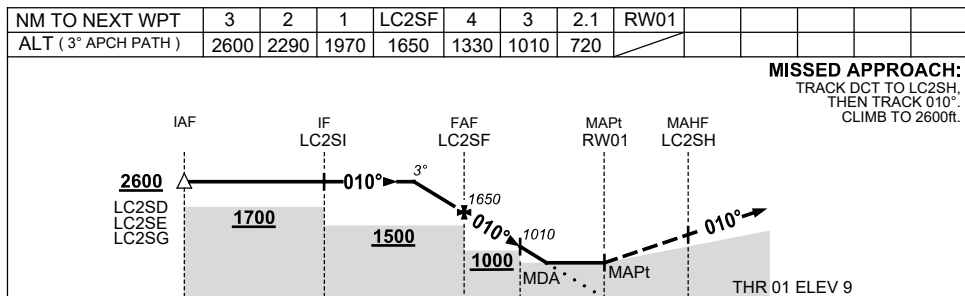
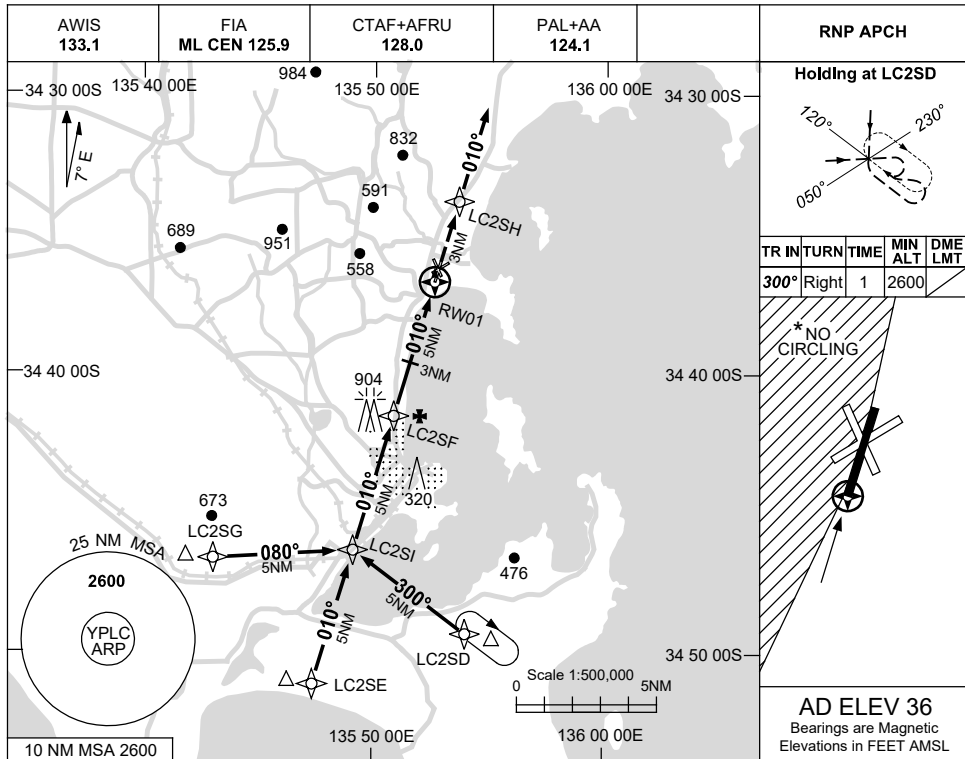


USE QNH

RNP RWY 01

28 NOV 2024

PORT LINCOLN, SA (YPLC)



NOTES

CATEGORY	A	B	C	D
LNAV	720 (711-4.1)			NOT APPLICABLE
CIRCLING *	1040 (1004-2.4)	1210 (1174-4.0)		
ALTERNATE	(1504-4.4)		(1674-6.0)	

- MAX IAS:
INITIAL : 230KT.
- NO CIRCLING WEST OF RWY 01 / 19.

Changes: FROM SUP H61/24.

PLCGN02-181