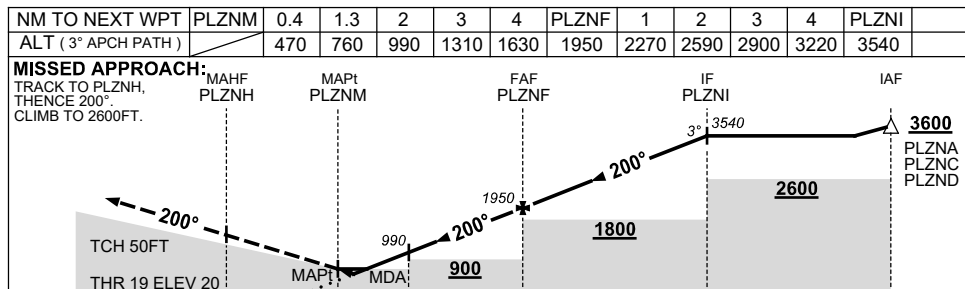
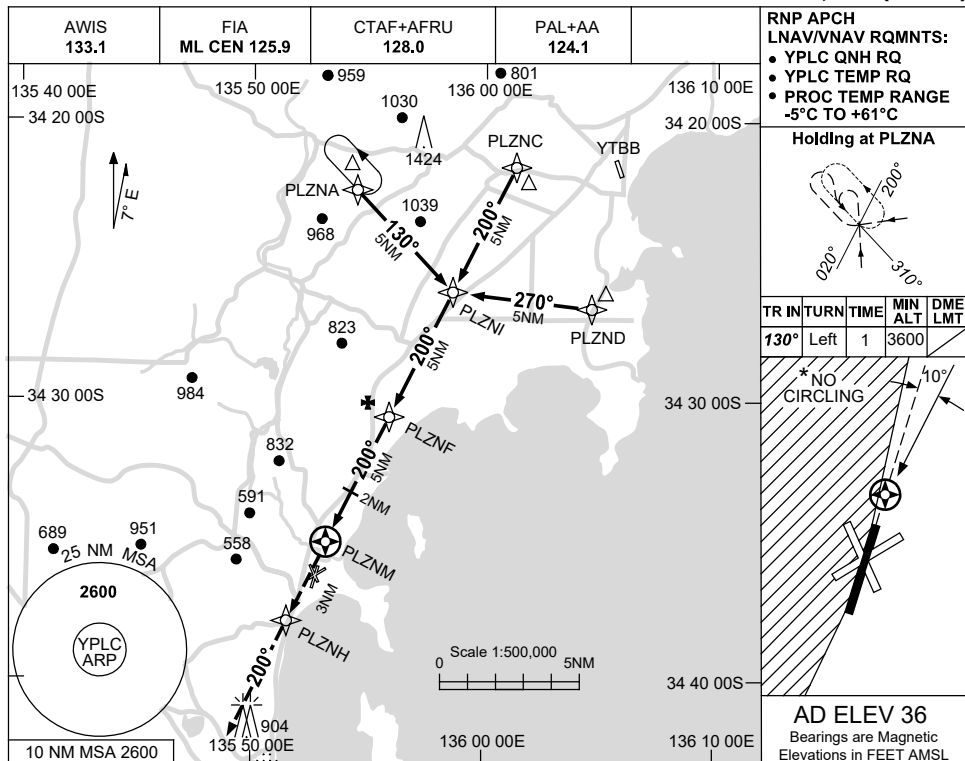


USE QNH

RNP RWY 19

**PORT LINCOLN, SA (YPLC)**

1 DEC 2022



**NOTES**

CATEGORY	A	B	C	D
LNAV/VNAV		470 (450-2.5)		NOT APPLICABLE
LNAV		760 (740-4.2)		
CIRCLING*	1040 (1004-2.4)	1210 (1174-4.0)		
ALTERNATE	(1504-4.4)	(1674-6.0)		

- MAX IAS:  
HOLDING: 210KT.  
INITIAL : 210KT.
- NO CIRCLING WEST OF RWY 01/19.
- HOLDING AND INITIAL OVER-LIES TUMBY BAY RNP PROC.

Changes: CHART TITLE, PBN SPECIFICATION BOX.

PLCGN01-173