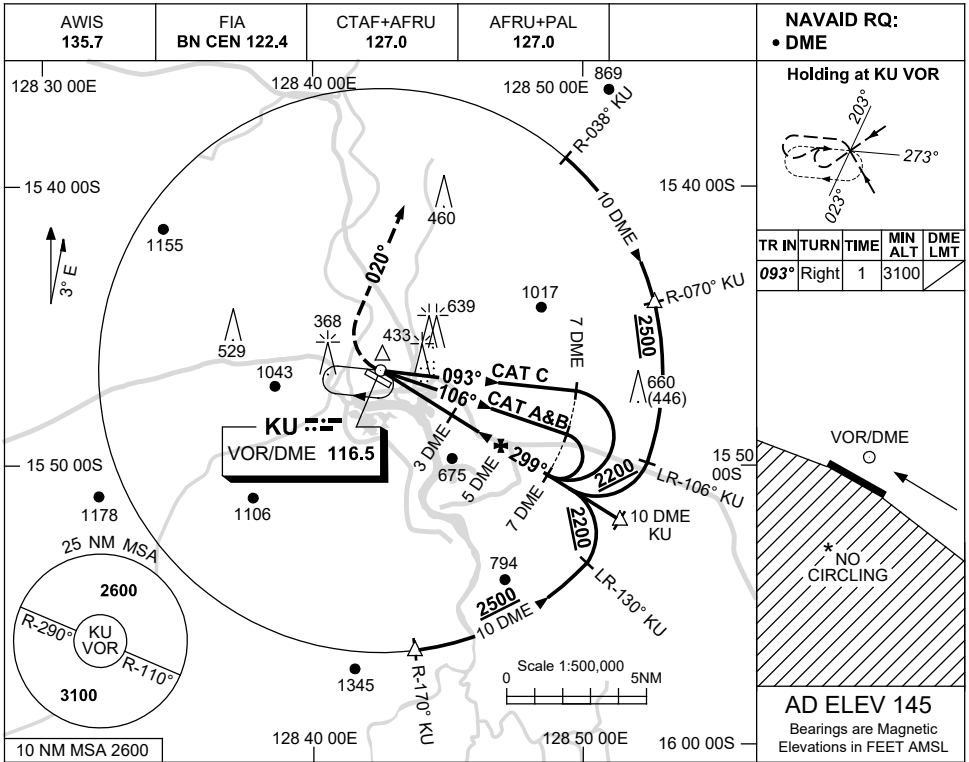


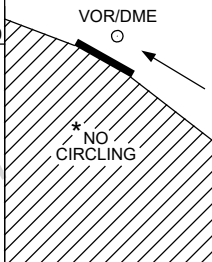
USE QNH

VOR RWY 30
KUNUNURRA, WA (YPKU)

1 DEC 2022



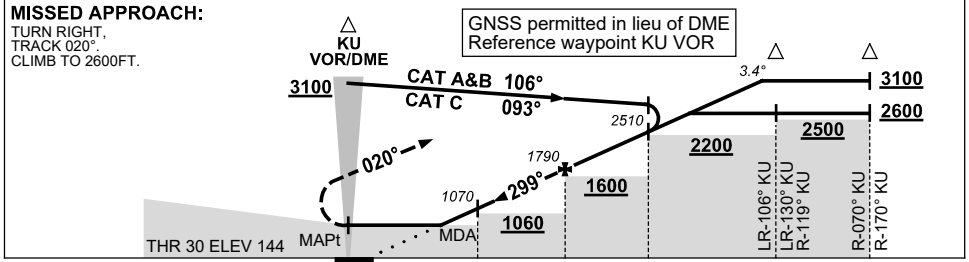
TR	IN	TURN	TIME	MIN ALT	DME LMT
093°	Right		1	3100	



AD ELEV 145
Bearings are Magnetic
Elevations in FEET AMSL

DIST TO KU DME	1.9	2	3	4	5	6	7	7.2	8	8.6		
ALT (3.4° APCH PATH)	680	710	1070	1430	1790	2150	2510	2600	2870	3100		

MISSED APPROACH:
TURN RIGHT,
TRACK 020°.
CLIMB TO 2600FT.



NM TO KU DME

NOTES

CATEGORY	A	B	C	D
S-I VOR/DME	680 (535-2.7)			NOT APPLICABLE
CIRCLING *	1190 (1045-2.4)		1350 (1205-4.0)	
ALTERNATE	(1545-4.4)		(1705-6.0)	

- MAX IAS:
INITIAL : 210KT.
- NO CIRCLING STH OF RWY 12/30.
- APCH PATH ANGLE DOES NOT COINCIDE WITH VASIS ON GLIDE SLOPE INDICATION.

Changes: REMOVE CAT D, Editorial.

PKUVO01-173