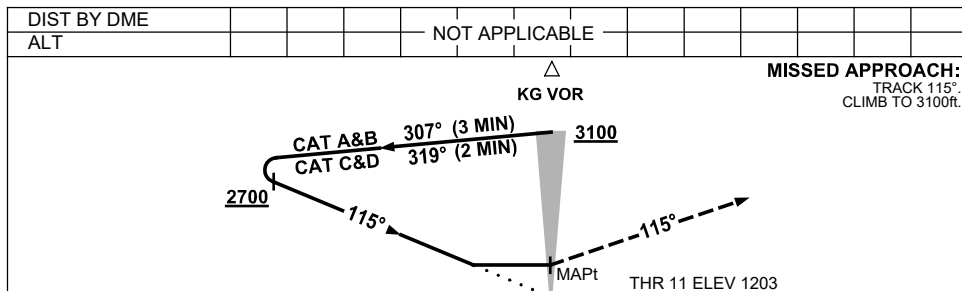
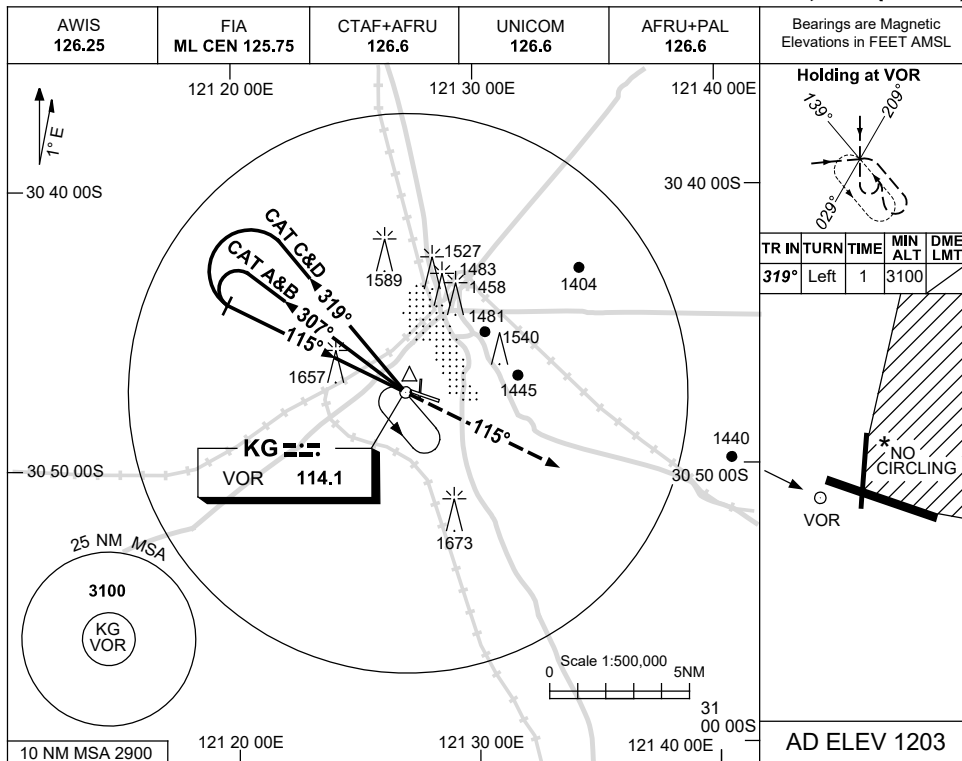


USE QNH

VOR-Y RWY 11

28 NOV 2024

**KALGOORLIE-BOULDER, WA (YPKG)**



**NOTES**

1. MAX IAS:  
INITIAL : 210KT.
  2. NO CIRCLING IN  
SECTOR NE OF RWY  
11/29 AND RWY 18/36.
- CAUTION:**  
1657FT RADIO MAST  
2.5NM 280°KG VOR/  
DME ON RWY APCH  
PATH.

CATEGORY	A	B	C	D
S-I VOR	<b>2030 (827-4.7)</b>			
CIRCLING	<b>2080 (877-2.4)</b>	<b>2180 (977-4.0)</b>	<b>2200 (997-5.0)</b>	
ALTERNATE	(1377-4.4)	(1477-6.0)	(1497-7.0)	

Changes: FROM SUP H117/24.

PKGVO05-181