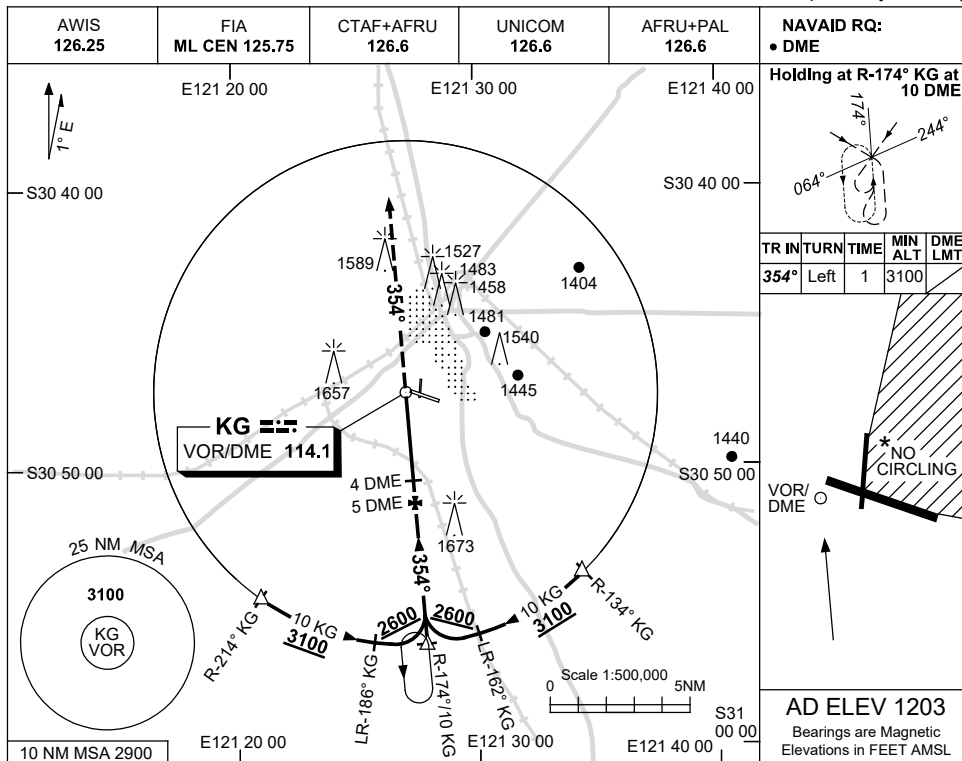


USE QNH

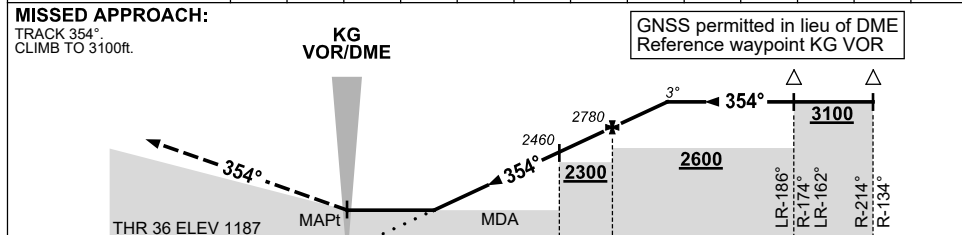
VOR-Z RWY 36

28 NOV 2024

KALGOORLIE-BOULDER, WA (YPKG)



DIST BY DME	1.9	2	3	4	5	6							
ALT (3° APCH PATH)	1780	1820	2150	2460	2780	3100							



**NOTES**

1. MAX IAS:  
INITIAL : 210KT.
  2. NO CIRCLING IN  
SECTOR NE OF RWY  
11/29 AND RWY 18/36.
- CAUTION:**  
1657FT RADIO MAST  
2.5NM 280°KG VOR/  
DME ON RWY APCH  
PATH.

CATEGORY	A	B	C	D
S-I VOR/DME	1780 (593-3.4)		NOT APPLICABLE	
CIRCLING	2080 (877-2.4)			
ALTERNATE	(1377-4.4)			

Changes: FROM SUP H117/24.

PKG004-181