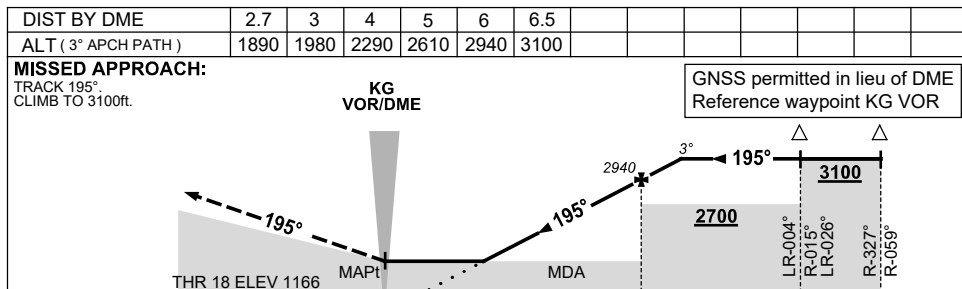
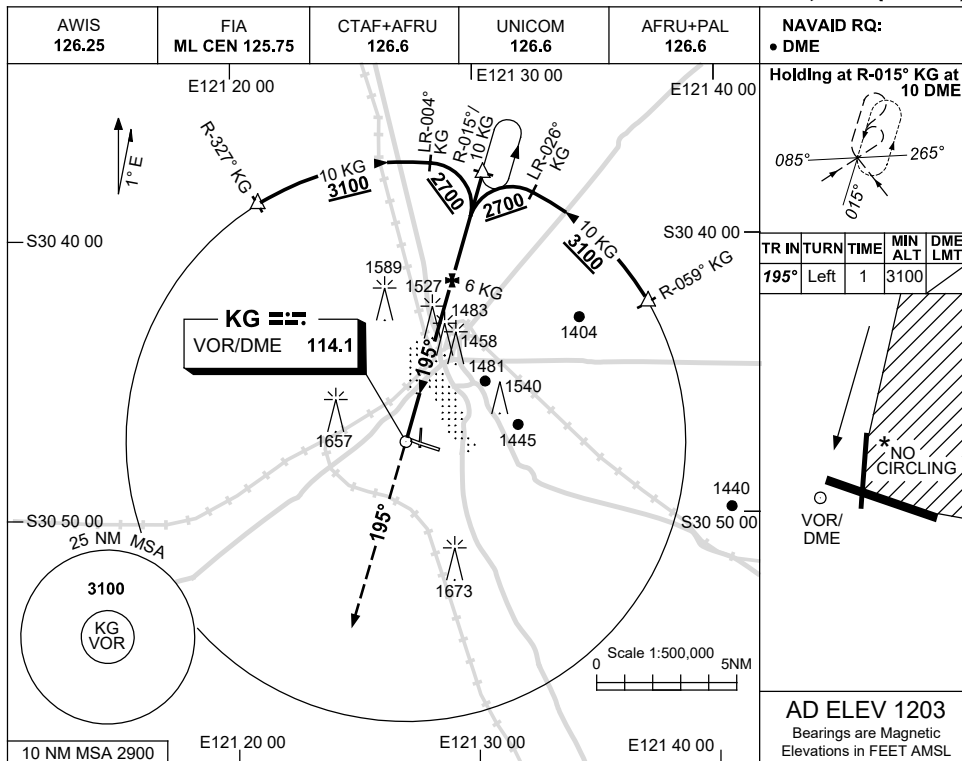


USE QNH

VOR-Z RWY 18

28 NOV 2024

KALGOORLIE-BOULDER, WA (YPKG)



NM BY DME	0	6	10	10			
-----------	---	---	----	----	--	--	--

NOTES

- MAX IAS:
INITIAL : 210KT.
- NO CIRCLING IN
SECTOR NE OF RWY
11/29 AND RWY 18/36.

CAUTION:
1657FT RADIO MAST
2.5NM 280°KG VOR/
DME ON RWY APCH
PATH.

CATEGORY	A	B	C	D
S-I VOR/DME	1890 (724-4.1)		NOT APPLICABLE	
CIRCLING	2080 (877-2.4)			
ALTERNATE	(1377-4.4)			

Changes: FROM SUP H117/24.

PKGVO02-181