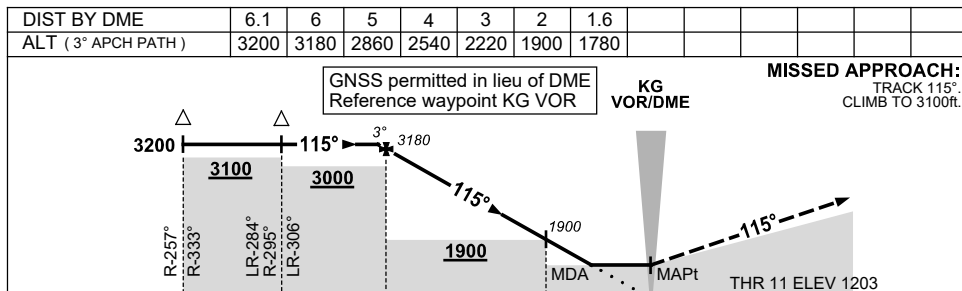
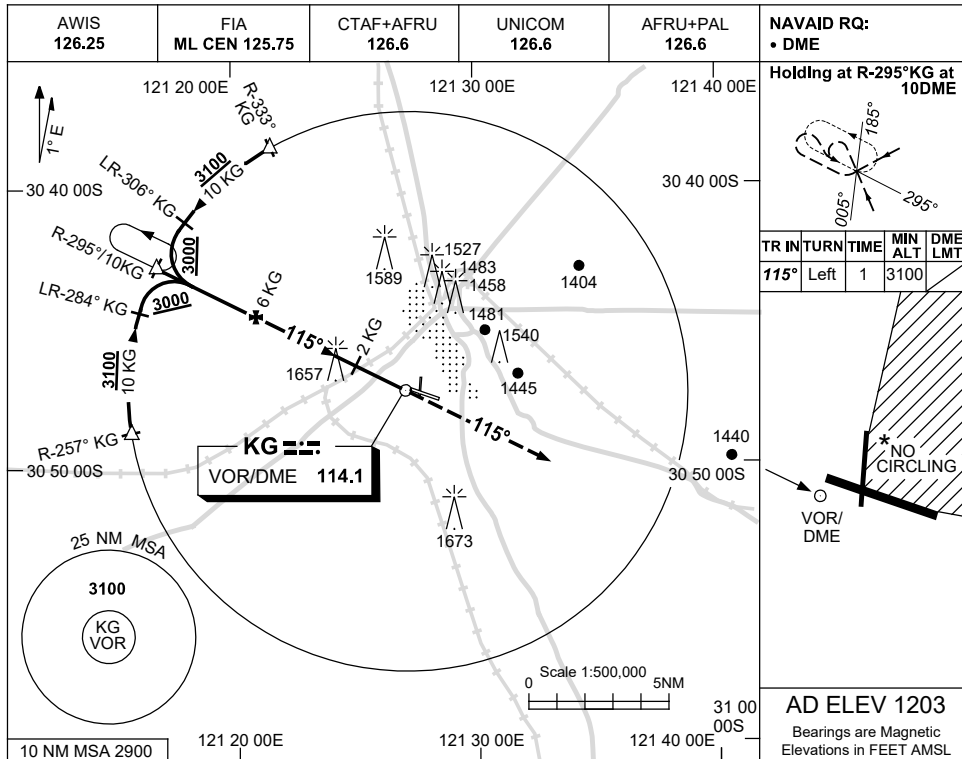


USE QNH

VOR-Z RWY 11

28 NOV 2024

KALGOORLIE-BOULDER, WA (YPKG)



**NOTES**

- MAX IAS:  
INITIAL : 210KT.
- NO CIRCLING IN SECTOR NE OF RWY 11/29 AND RWY 18/36.

**CAUTION:**  
1657FT RADIO MAST  
2.5NM 280°KG VOR/  
DME ON RWY APCH  
PATH.

CATEGORY	A	B	C	D
S-I VOR/DME	<b>1780 (577-3.3)</b>			
CIRCLING	<b>2080 (877-2.4)</b>	<b>2180(977-4.0)</b>	<b>2200(997-5.0)</b>	
ALTERNATE	(1377-4.4)	(1477-6.0)	(1497-7.0)	

Changes: FROM SUP H117/24.

PKGVO01-181