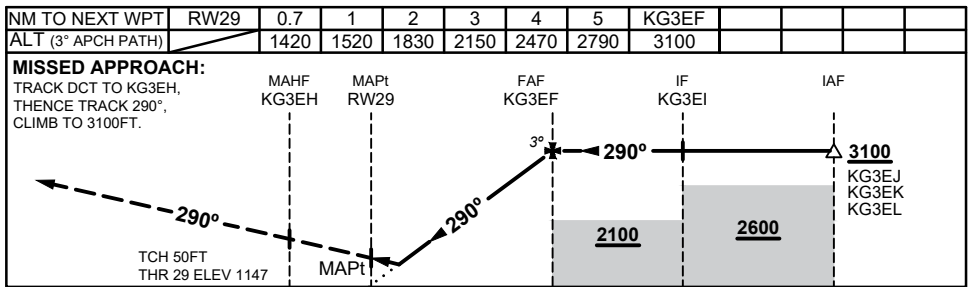
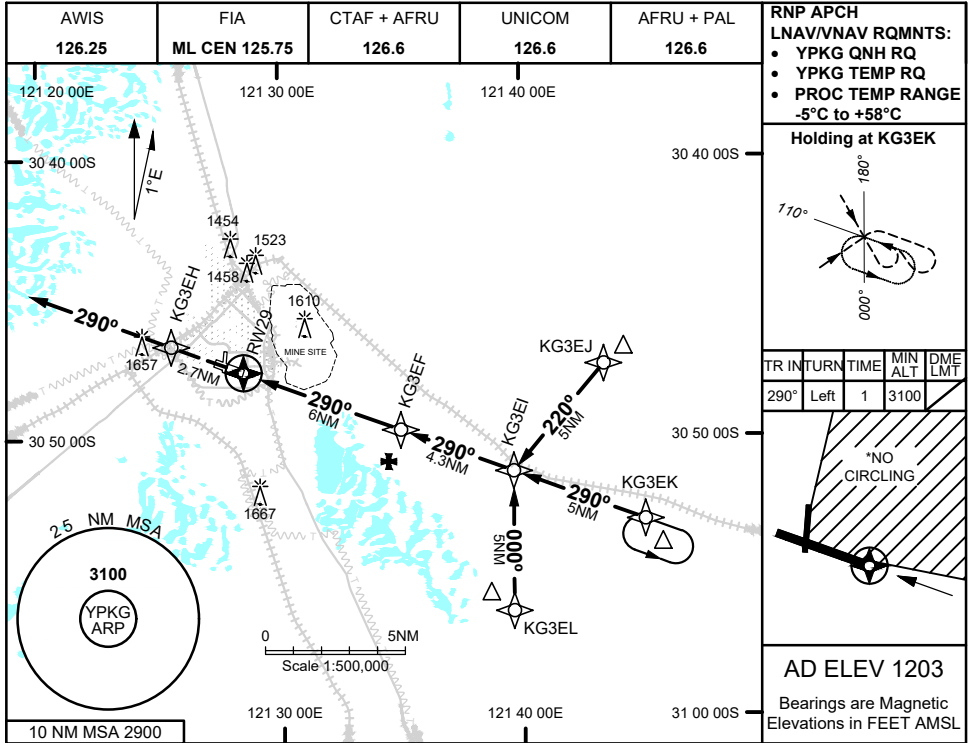


USE QNH

RNP Y RWY 29 (LNAV/VNAV ONLY)

KALGOORLIE-BOULDER, WA (YPKG)

28 NOV 2024



NOTES

1. MAX IAS:
INITIAL : 210KTS
- *2.NO CIRCLING IN
SECTOR NE OF
RWY 11/29 AND
RWY 18/36

CAUTION:

1657FT RADIO MAST
3NM/277° FROM ARP

CATEGORY	A	B	C	D
LNAV/VNAV	1420 (273 - 1.5)			
CIRCLING*	2080 (877 - 2.4)		2180 (977 - 4.0)	
ALTERNATE	(1377 - 4.4)		(1497 - 7.0)	

Changes: FROM SUP H117/24

PKGGN08-181