

USE QNH

RNP U RWY 29 (AR)

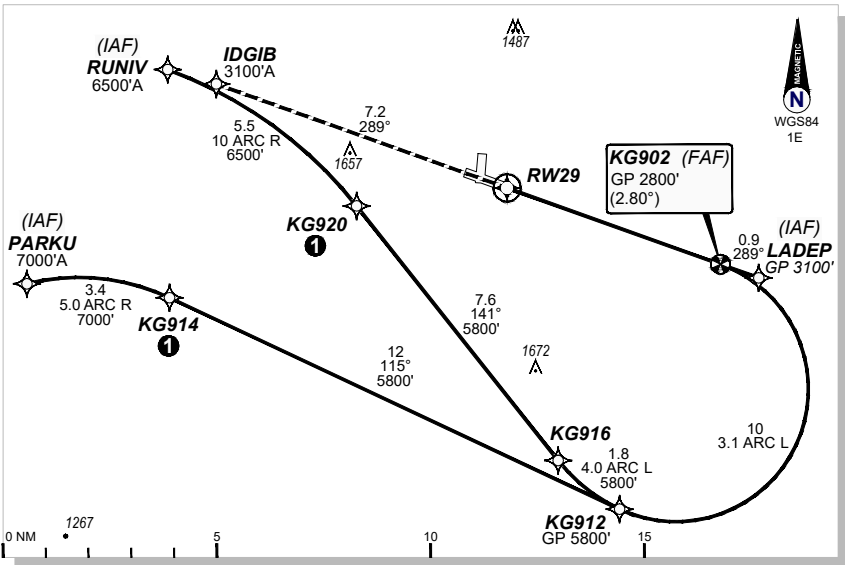
7 SEP 2023

KALGOORLIE-BOULDER (YPKG)

AWIS <b>126.25</b>	FIA <b>ML CEN 125.75</b>	CTAF + AFRU <b>126.6</b>	UNICOM <b>126.6</b>	AFRU + PAL <b>126.6</b>	RNP AR APCH -RF RQ -YPKG ACT QNH RQ -YPKG ACT TEMP RQ -PROCE TEMP RANGE -2°C TO +46°C
RNP AR <b>RNV U 29</b>	Apt Elev. <b>1203'</b> TDZE <b>1147'</b>	KG902 (FAF) <b>GP 2800' (2.80°)</b>	Trans Level <b>FL110</b>		

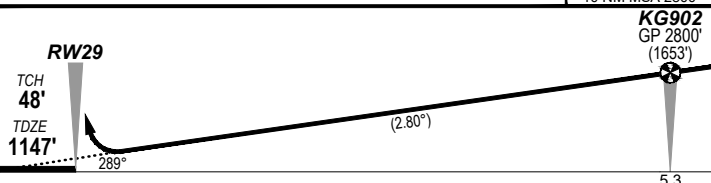
GE PROPRIETARY INFORMATION

① Latest position where the aircraft can join the procedure.



**MISSED APPROACH:**

Climb to 3100' via the RNP AR  
Missed Approach track to IDGIB.



**NOTES:**

- 1. Minimum MAP gradient (AE) 3.8% to 3100 FT.

		RNP <b>0.20</b>	RNP <b>0.30</b>
		DA(H) <b>1429'</b> (282)	DA(H) <b>1503'</b> (356')
C	C	<b>1500m</b>	<b>2000m</b>

**FOR CASA APPROVED OPERATORS ONLY**

202305171434COPYRIGHT 2023 NAVERUS, INC. USA

Changes: PROC NAME, RNAV (RNP) to RNP AR, Added PBN BOX, Removed Note 2, Removed background image.

PKGGN06-176

**DO NOT USE FOR NAVIGATION**

