

USE QNH

RNP U RWY 11 (AR)

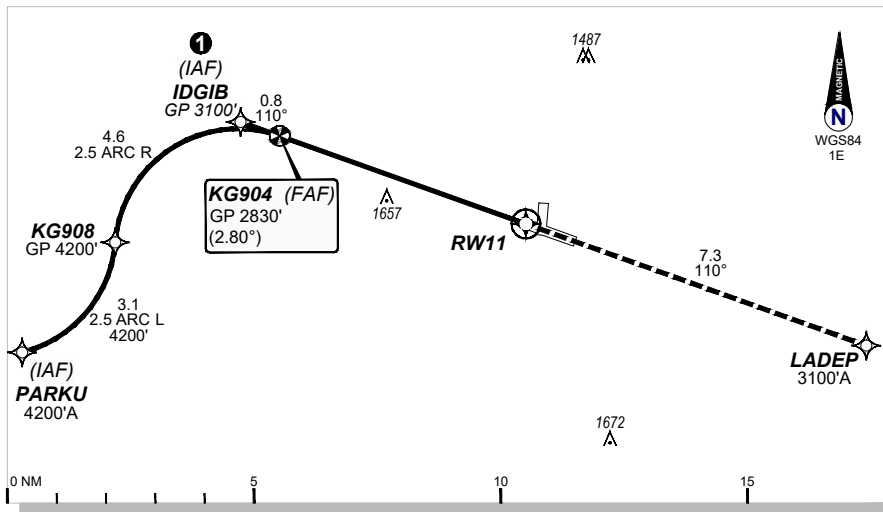
7 SEP 2023

KALGOORLIE-BOULDER (YPKG)

AWIS 126.25	FIA ML CEN 125.75	CTAF + AFRU 126.6	UNICOM 126.6	AFRU + PAL 126.6	RNP AR APCH -RF RQ -YPKG ACT QNH RQ -YPKG ACT TEMP RQ -PROCE TEMP RANGE -2°C TO +46°C
RNP AR RNV U 11	Apt Elev. 1203' TDZE 1203'	KG904 (FAF) GP 2830' (2.80°)	Trans Level FL110		

GE PROPRIETARY INFORMATION

① Latest position where the aircraft can join the procedure.

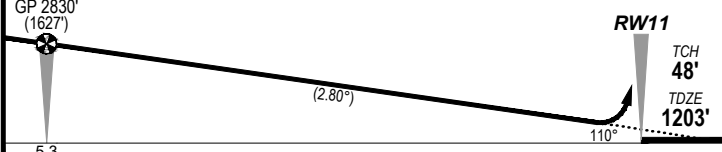


MISSED APPROACH:

Climb to **3100'** via the RNP AR
Missed Approach track to **LADEP**.



KG904
GP 2830'
(1627')



NOTES:

1. Minimum MAP gradient (AE) 3.5% to 3100 FT.

				RNP 0.30
				DA(H) 1543' (340')
C	C	C	C	1900m

FOR CASA APPROVED OPERATORS ONLY

202305171434COPYRIGHT 2023 NAVERUS, INC. USA

Changes: PROC NAME, RNAV (RNP) to RNP AR, Added PBN BOX, Removed Note 2, Removed background image.

PKGGN05-176

DO NOT USE FOR NAVIGATION

