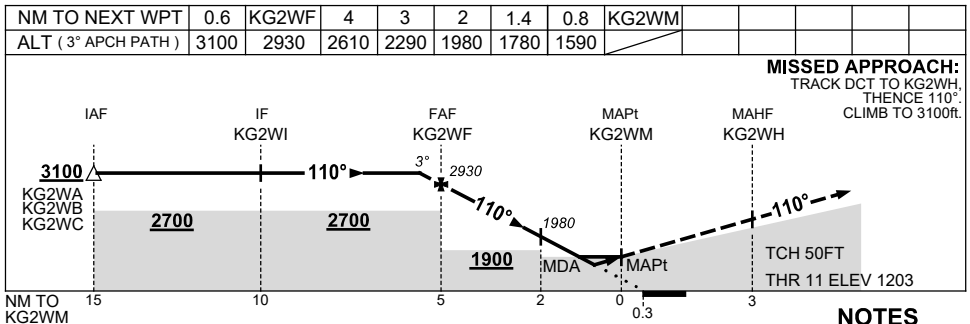
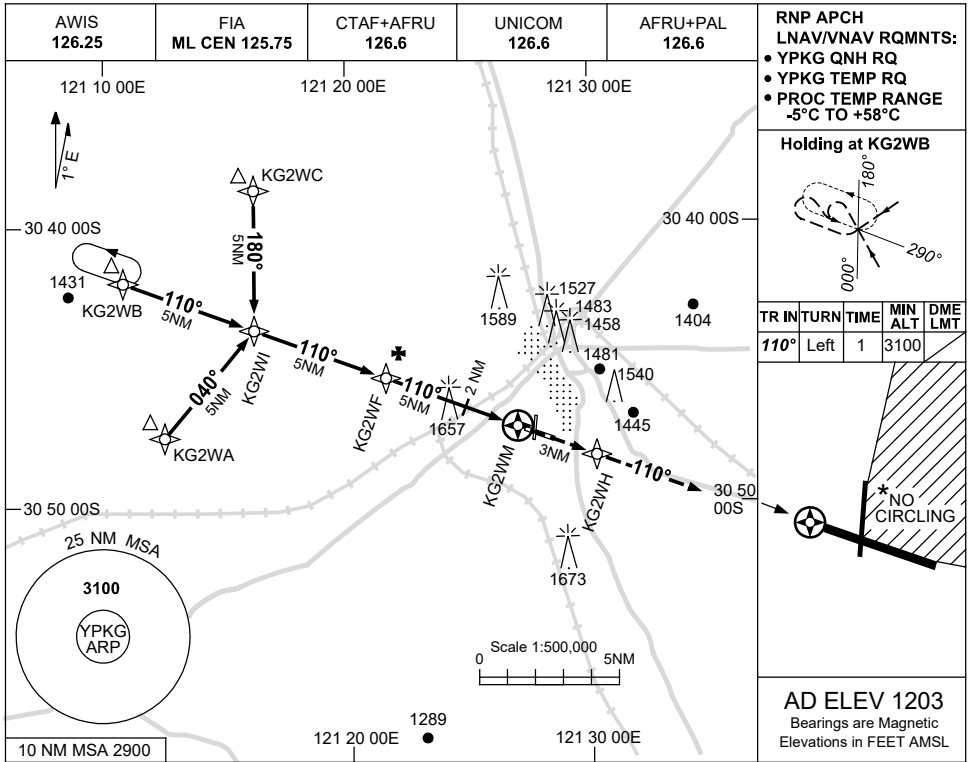


USE QNH

RNP Z RWY 11

28 NOV 2024

KALGOORLIE-BOULDER, WA (YPKG)



NOTES

1. MAX IAS:
INITIAL : 210KT.
2. NO CIRCLING IN
SECTOR NE OF RWY
11/29 AND RWY 18/36.

CAUTION:
1657FT RADIO MAST
2.5NM 280°KG VOR/
DME ON RWY APCH
PATH.

CATEGORY	A	B	C	D
LNAV/VNAV		1590 (387-2.2)		
LNAV		1780 (577-3.3)		
CIRCLING	2080 (877-2.4)		2180 (977-4.0) 2200 (997-5.0)	
ALTERNATE	(1377-4.4)		(1477-6.0) (1497-7.0)	

Changes: FROM SUP H117/24.

PKGNG01-181