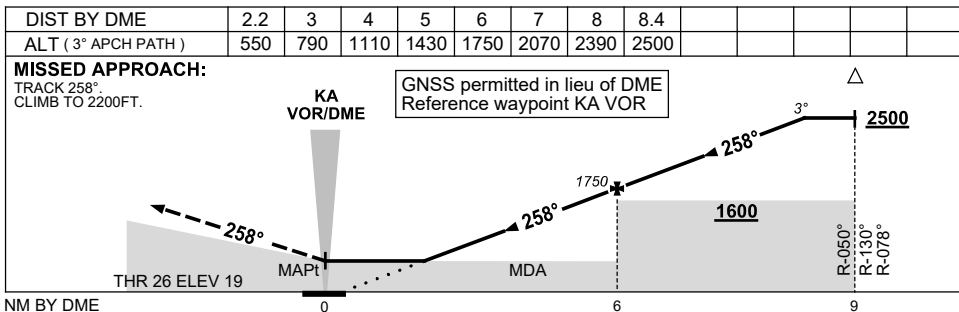
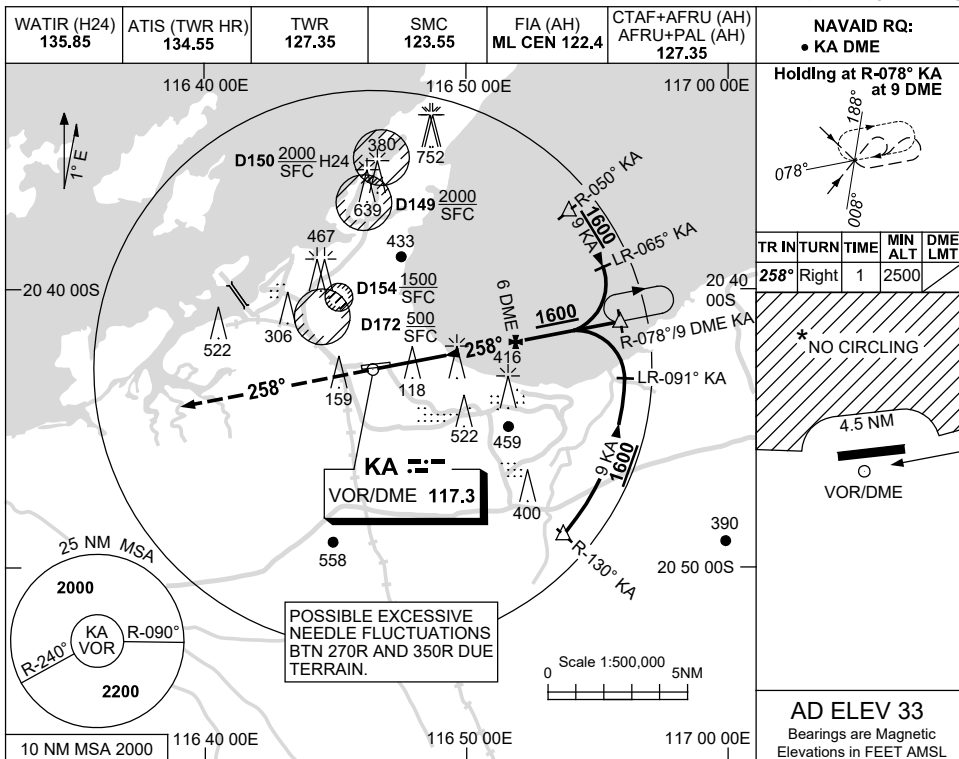


USE QNH

VOR-Z RWY 26

5 NOV 2020

KARRATHA, WA (YPKA)



CATEGORY	A	B	C	D
S-I VOR/DME	550 (531-3.0)			
CIRCLING *	860 (827-2.4)		1090 (1057-4.0) 1090 (1057-5.0)	
ALTERNATE	(1327-4.4)		(1557-6.0) (1557-7.0)	

- NOTES**
- MAX IAS:
INITIAL : 210KT.
 - D154 MAYBE IN USE WITHOUT NOTAM PROMULGATION.
 - *3. NO CIRCLING N OF RWY 08/26 BEYOND 4.5NM.

Changes: THR AND AD ELEV, GRID COORD FORMAT.

PKAV002-165