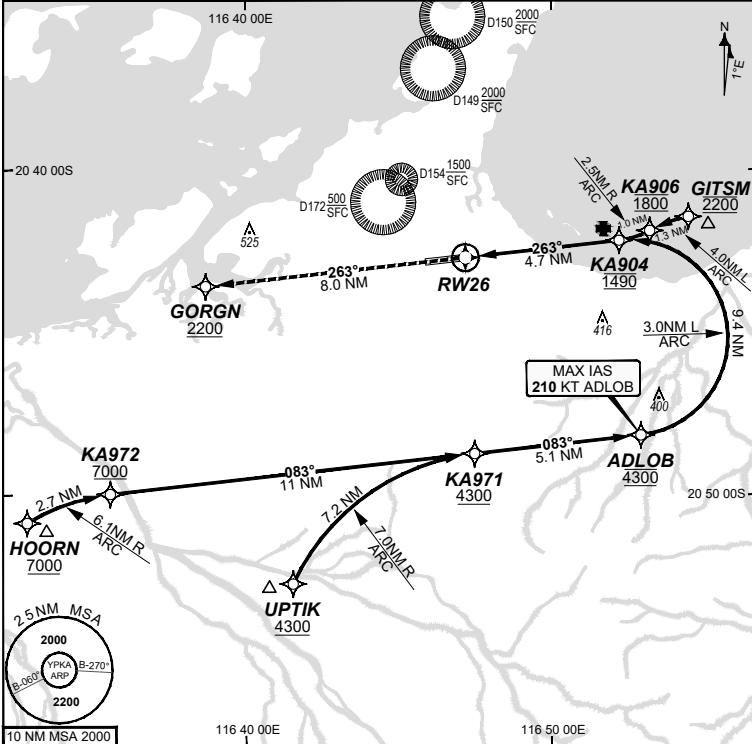


**FOR CASA APPROVED
OPERATORS ONLY
USE QNH**

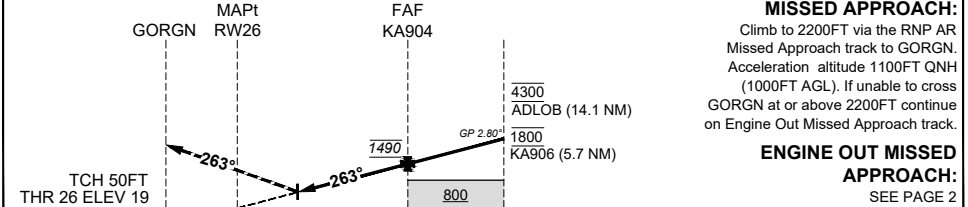
13 JUN 2024

WATIR (H24) 135.85	ATIS (TWR HR) 134.55	TWR 127.35	SMC 123.55	FIA (AH) ML CEN 122.4	CTAF+AFRU (AH) AFRU+PAL (AH) 127.35	RNV U 26 THR ELEV 19	RNP AR APCH - RF RQ - YPKA ACT QNH RQ - YPKA ACT TEMP RQ - PROC TEMP RANGE +8°C TO +46°C
------------------------------	--------------------------------	----------------------	----------------------	---------------------------------	--	--------------------------------	---



Holding as directed by ATC					
TR	INT	TURN	TIME	MIN ALT	DME LMT
AD ELEV 33 Bearings are Magnetic Elevations in FEET AMSL					

ALT (2.80° APCH PATH)	RW26	0.7	KA904	KA906	ADLOB		
		269	1490	1800	4300		



MISSED APPROACH:
Climb to 2200FT via the RNP AR Missed Approach track to GORGN. Acceleration altitude 1100FT QNH (1000FT AGL). If unable to cross GORGN at or above 2200FT continue on Engine Out Missed Approach track.

ENGINE OUT MISSED APPROACH:
SEE PAGE 2

NM FM THR

CATEGORY	A	B	C	D
RNP (0.30)			DA(H) 269 (250 - 1.3)	DA(H) 269 (250 - 1.3)
CIRCLING			NOT AUTHORISED	NOT AUTHORISED
ALTERNATE				

NOTES

- Lateral transition to MAP must not be initiated prior to DA/H PSN.
- APCH Path does not coincide with PAPI glide path 3°.
- MIN MAP GRAD (AE) for RNP 0.30 4.0% to 2200 FT.

202401301033 COPYRIGHT 2024 GE AEROSPACE. ALL RIGHTS RESERVED. GE PROPRIETARY INFORMATION
Changes: GE Aerospace name revision, MCNAB to UPTIK, SWENI to ADLOB. PKAGN04-179

DO NOT USE FOR NAVIGATION

