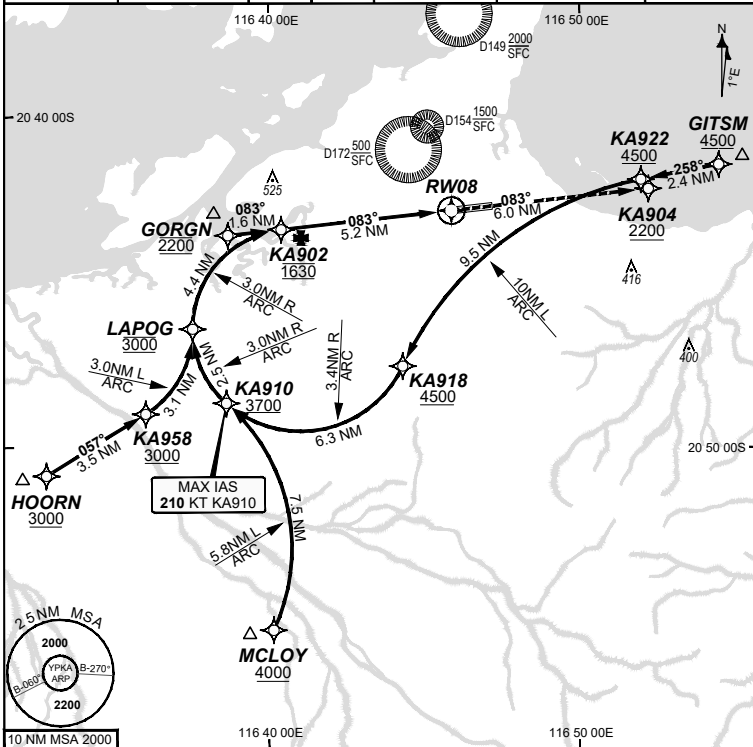


**FOR CASA APPROVED OPERATORS ONLY**

13 JUN 2024

USE QNH

WATIR (H24) <b>135.85</b>	ATIS (TWR HR) <b>134.55</b>	TWR <b>127.35</b>	SMC <b>123.55</b>	FIA (AH) <b>ML CEN 122.4</b>	CTAF+AFRU (AH) AFRU+PAL (AH) <b>127.35</b>	RNV U 08 <b>THR ELEV 33</b>	RNP AR APCH - RF RQ - YPKA ACT QNH RQ - YPKA ACT TEMP RQ - PROC TEMP RANGE <b>+8°C TO +46°C</b>
------------------------------	--------------------------------	----------------------	----------------------	---------------------------------	--	--------------------------------	--

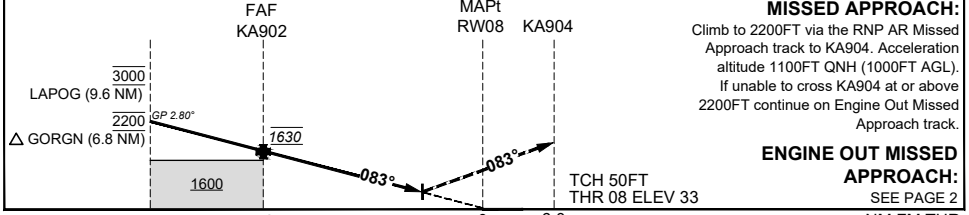


Holding as directed by ATC

TR	INT	TURN	TIME	MIN ALT	DME LMT

AD ELEV 33  
Bearings are Magnetic  
Elevations in FEET AMSL

ALT (2.80° APCH PATH)	LAPOG	GORGN	KA902	0.7	RW08				
	3000	2200	1630	297					



CATEGORY	A	B	C	D
RNP (0.30)			DA(H) 297 (264 - 1.4)	DA(H) 297 (264 - 1.4)
CIRCLING	N/A		NOT AUTHORISED	NOT AUTHORISED
ALTERNATE				

- NOTES**
- Lateral transition to MAP must not be initiated prior to DA/H PSN.
  - APCH Path does not coincide with PAPI glide path 3°.
  - MIN MAP GRAD (AE) for RNP 0.30 5.1% to 2200 FT.

202401261509 COPYRIGHT 2024 GE AEROSPACE. ALL RIGHTS RESERVED. GE PROPRIETARY INFORMATION  
Changes: GE Aerospace name revision, MURAY to LAPOG. PKAGN03-179

**DO NOT USE FOR NAVIGATION**  
Prepared by GE Aerospace

