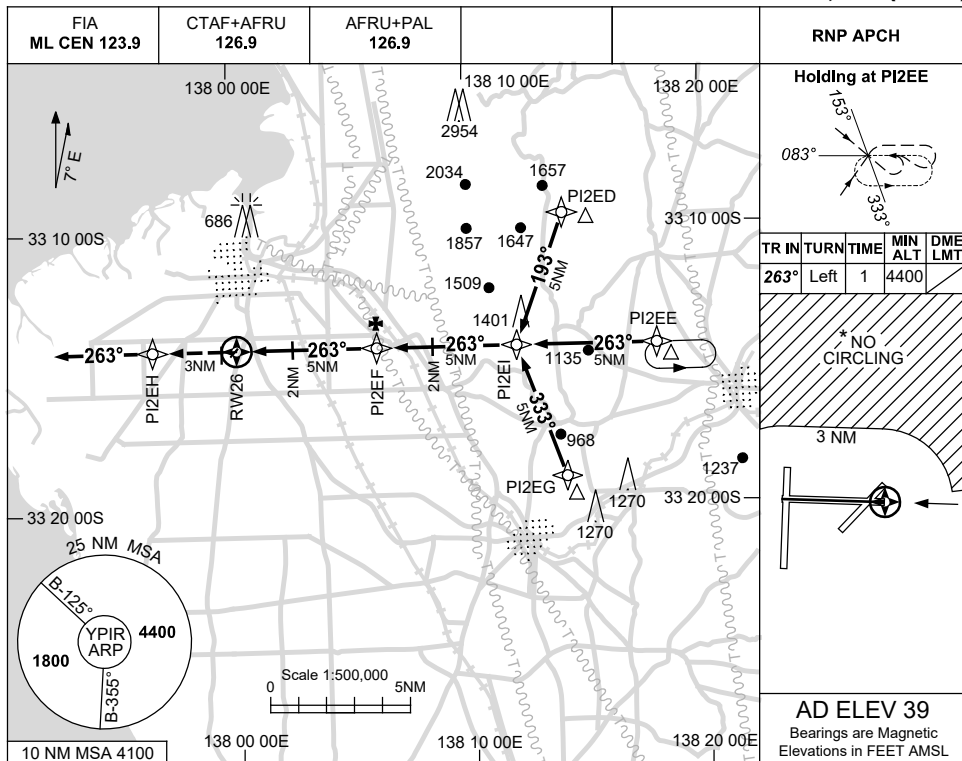


USE QNH

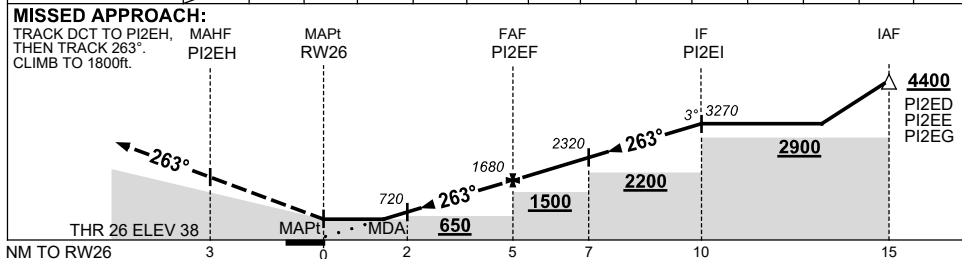
RNP RWY 26

PORT PIRIE, SA (YPIR)

5 SEP 2024



NM TO NEXT WPT	RW26	1.5	2	3	4	P12EF	1	2	3	4	P12EI		
ALT (3° APCH PATH)		550	720	1040	1360	1680	2000	2320	2640	2950	3270		



NOTES

CATEGORY	A	B	C	D
LNAV	550 (511-2.9)			NOT APPLICABLE
CIRCLING *	660 (621-2.4)		830 (791-4.0)	
ALTERNATE	(1121-4.4)		(1291-6.0)	

- MAX IAS: INITIAL : 210KT.
- NO CIRCLING N OF RWY 08 / 26 BEYOND 3NM.

Changes: 10NM MSA, RW26 MAPT, WPT NAMING CONVENTION, Editorial.

PIRGN02-180