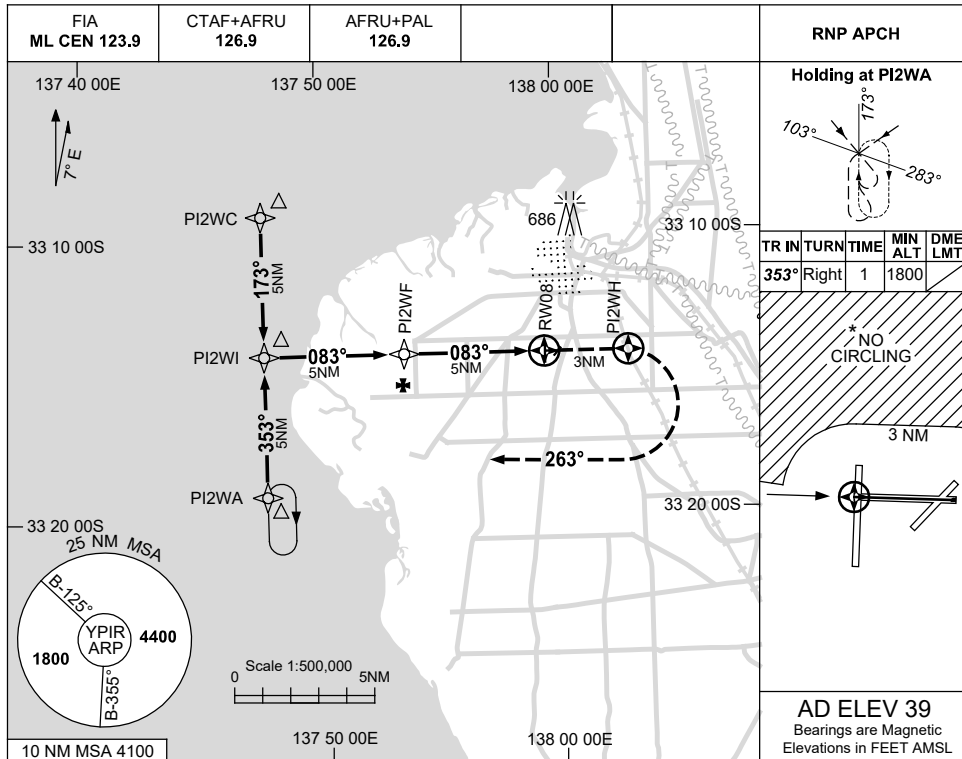


USE QNH

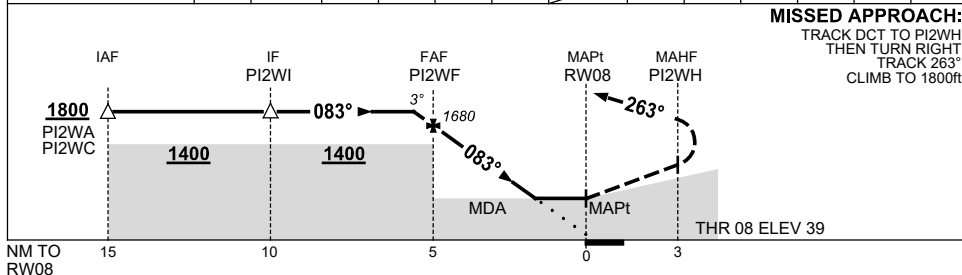
RNP RWY 08

PORT PIRIE, SA (YPIR)

5 SEP 2024



NM TO NEXT WPT	0.4	PI2WF	4	3	2	1.5	RW08
ALT (3° APCH PATH)	1800	1680	1360	1040	730	550	



NOTES

CATEGORY	A	B	C	D
LNAV	550 (511-2.9)			NOT APPLICABLE
CIRCLING *	660 (621-2.4)		830 (791-4.0)	
ALTERNATE	(1121-4.4)		(1291-6.0)	

- MAX IAS:
INITIAL : 210KT.
- NO CIRCLING N OF RWY 08 / 26 BEYOND 3NM.

Changes: 10NM MSA, RW08 MAPt, THR ELEV, DIST-ALT TABLE, WPT NAMING CONVENTION, Editorial. PIRGN01-180