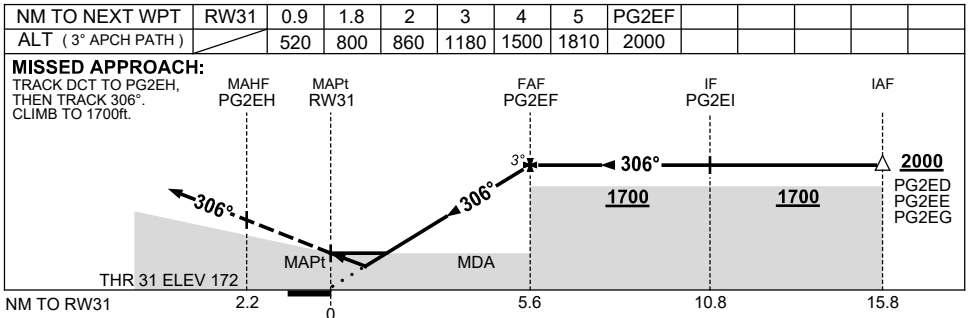
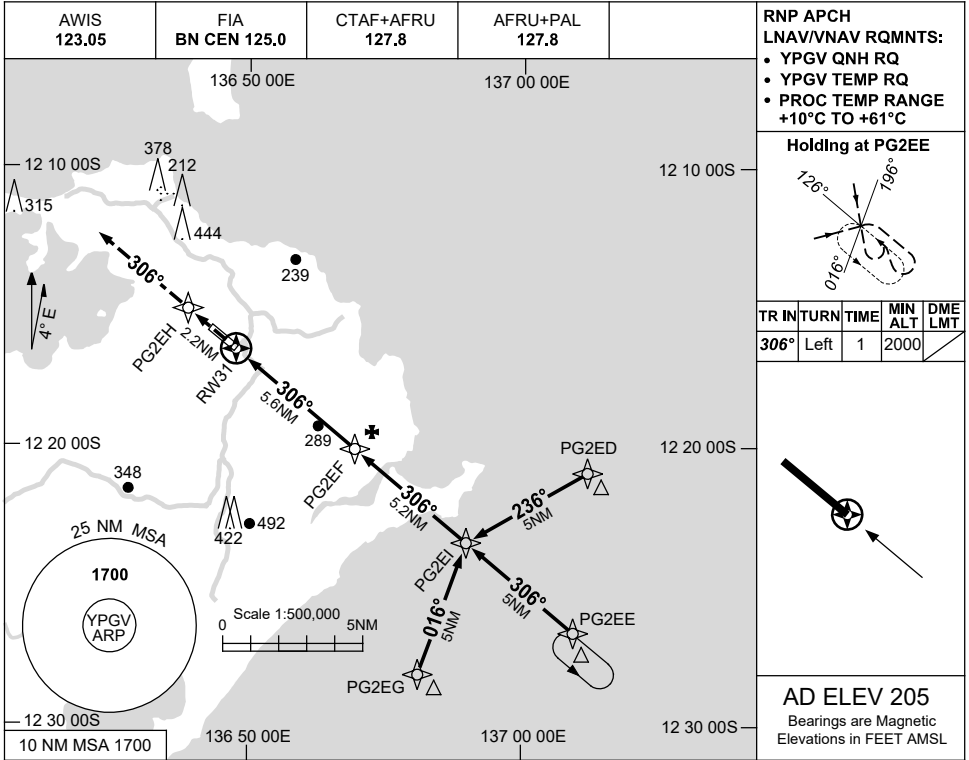


USE QNH

RNP RWY 31
GOVE, NT (YPGV)

5 SEP 2024



NOTES

1. MAX IAS:
INITIAL : 240KT.

CATEGORY	A	B	C	D
LNAV/VNAV	520 (348-1.9)			
LNAV	800 (628-3.6)			
CIRCLING	840 (635-2.4)	940 (735-4.0)	1010 (805-5.0)	
ALTERNATE	(1135-4.4)		(1305-7.0)	

Changes: LNAV/VNAV, DIST-ALT TABLE, MAPt, MISSED APCH TRACK.

PGVGN02-180