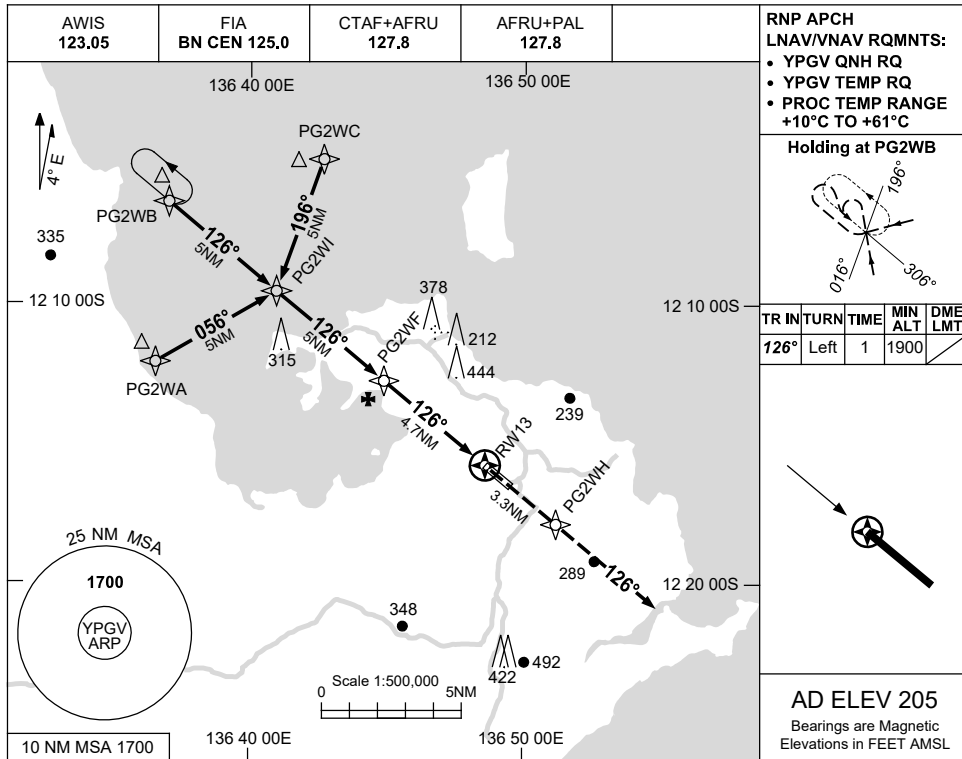


USE QNH

RNP RWY 13
GOVE, NT (YPGV)

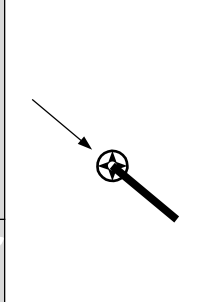
5 SEP 2024



RNP APCH
LNAV/VNAV RQMTS:
• YPGV QNH RQ
• YPGV TEMP RQ
• PROC TEMP RANGE
+10°C TO +61°C

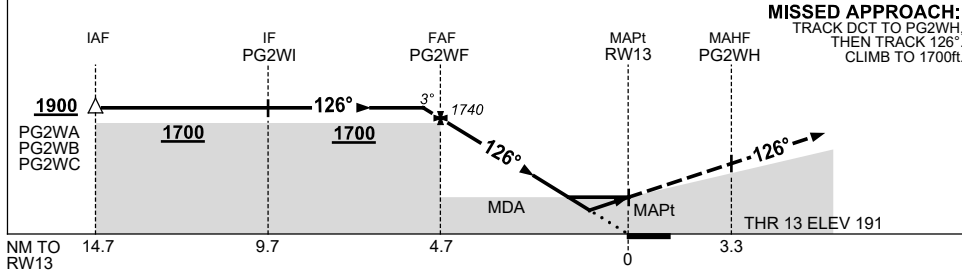
Holding at PG2WB

TR	IN	TURN	TIME	MIN ALT	DME LMT
126°	Left	1	1900		



AD ELEV 205
Bearings are Magnetic
Elevations in FEET AMSL

NM TO NEXT WPT	0.5	PG2WF	4	3	2	1.5	0.9	RW13
ALT (3° APCH PATH)	1900	1740	1510	1200	880	730	540	



MISSED APPROACH:
TRACK DCT TO PG2WH,
THEN TRACK 126°.
CLIMB TO 1700ft.

NOTES

CATEGORY	A	B	C	D
LNAV/VNAV		540 (349-1.9)		
LNAV		730 (539-3.1)		
CIRCLING	840 (635-2.4)	940 (735-4.0)	1010 (805-5.0)	
ALTERNATE	(1135-4.4)		(1235-6.0)	(1305-7.0)

1. MAX IAS:
INITIAL : 240KT.

Changes: LNAV/VNAV, DIST-ALT TABLE, MAPt, MISSED APCH TRACK.

PGVGN01-180