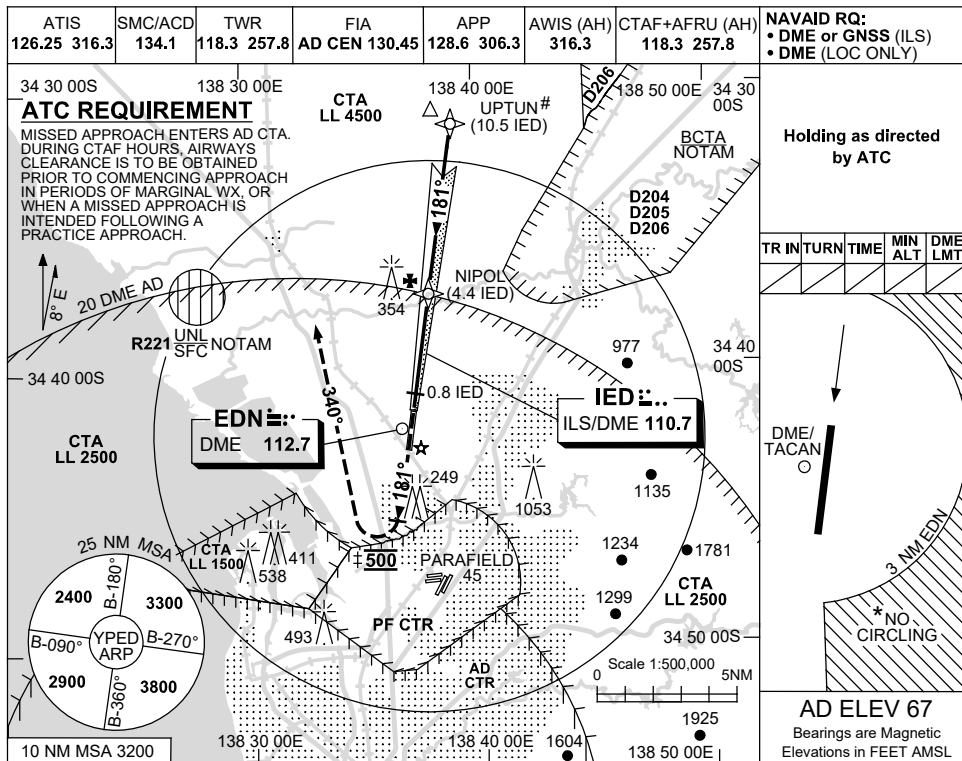


USE QNH

ILS-Z or LOC-Z RWY 18
EDINBURGH, SA (YPED)

28 NOV 2024



Holding as directed by ATC

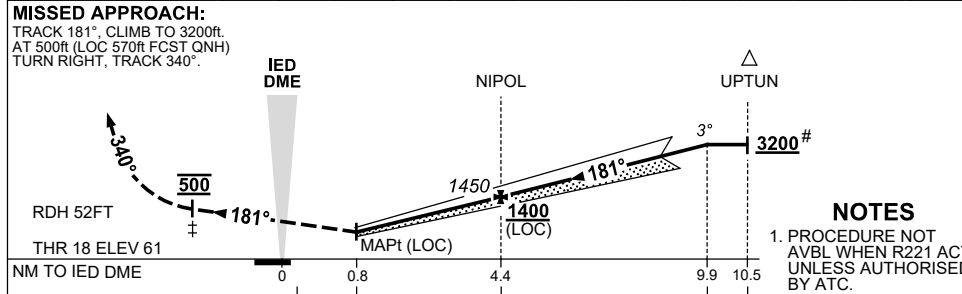
TR IN	TURN	TIME	MIN ALT	DME LMT

DME/TACAN

3 NM EDN

AD ELEV 67
Bearings are Magnetic
Elevations in FEET AMSL

NM TO IED DME	1.6	2	3	4	NIPOL	5	6	7	8	9	9.9		
ALT (3° APCH PATH)	570	690	1010	1330	1450	1650	1970	2280	2600	2920	3200		



NM TO IED DME	0	0.8	4.4	9.9	10.5
NM TO THR 18	0	0.6	4.2	9.8	10.4

CATEGORY	A	B	C	D
S-I ILS		380 (319)	1.0	
S-I LOC #		570 (503-2.1)		
CIRCLING *	800 (733-2.4)		850 (783-4.0)	890 (823-5.0)
ALTERNATE	(1233-4.4)		(1283-6.0)	(1323-7.0)

Changes: DME FREQ. PEDII01-181