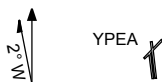


**STANDARD INSTRUMENT ARRIVAL (STAR)  
PEARCE FOUR ROMEO ARRIVAL (RNAV)  
PEARCE, WA (YPEA)**

**13 JUN 2024**

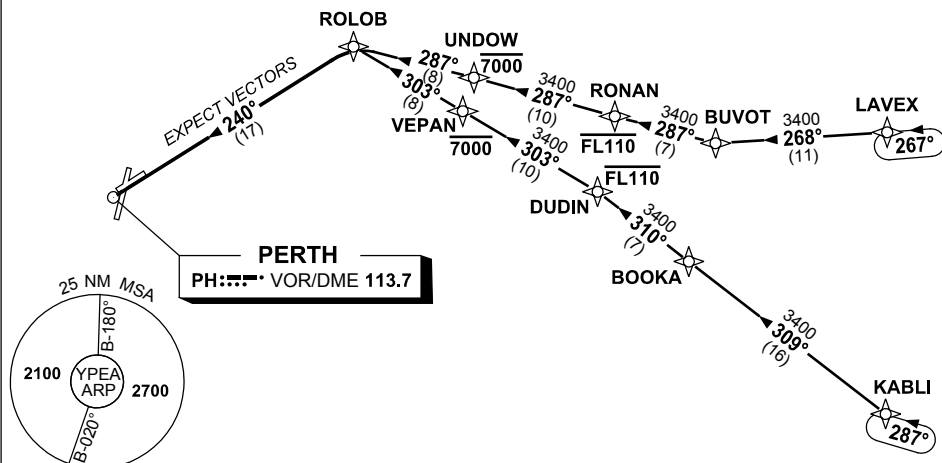
ATIS 340 136.4 316.1	DEP <b>PEA CEN</b> 123.3 135.9	APP <b>PEA APP</b> 130.2	TWR 118.3 257.8	FIA (AH) <b>PH CEN</b> 135.25	CTAF+AFRU (AH) 118.3	AWIS (AH) 316.1	Bearings are Magnetic Elevations in FEET AMSL
----------------------------	--------------------------------------	--------------------------------	--------------------	----------------------------------	-------------------------	--------------------	--

NOT TO SCALE



**SPEED  
MAX IAS 250KT  
BELOW 10,000ft**

**RNP1**



**TRANSITIONS:**

- LAVEX:**
- From LAVEX, track 268° to BUVOT, (NON-JET)
  - Turn RIGHT, track 287° to RONAN, **Cross** RONAN AT or BLW FL110,
  - Track 287° to UNDOU, **Cross** UNDOU AT or BLW 7000ft,
  - Track 287° to ROLOB, Then follow ARRIVAL instructions

- KABLI:**
- From KABLI, track 309° to BOOKA, (JET)
  - Track 310° to DUDIN, **Cross** DUDIN AT or BLW FL110,
  - Turn LEFT, track 303° to VEPAN, **Cross** VEPAN AT or BLW 7000ft,
  - Track 303° to ROLOB, Then follow ARRIVAL instructions

**ARRIVAL: PEARCE FOUR ROMEO**

- From ROLOB turn LEFT
- Track 240° to PH VOR
- Expect radar vectors to YPEA

**COMMUNICATIONS FAILURE: PROCEDURE IN IMC**

- Squawk 7600, comply with vertical navigation requirements, but not below MSA.
- Track via the latest STAR clearance to the nominated runway, then fly the most suitable approach in accordance with ERSA EMERG Section 1.5.