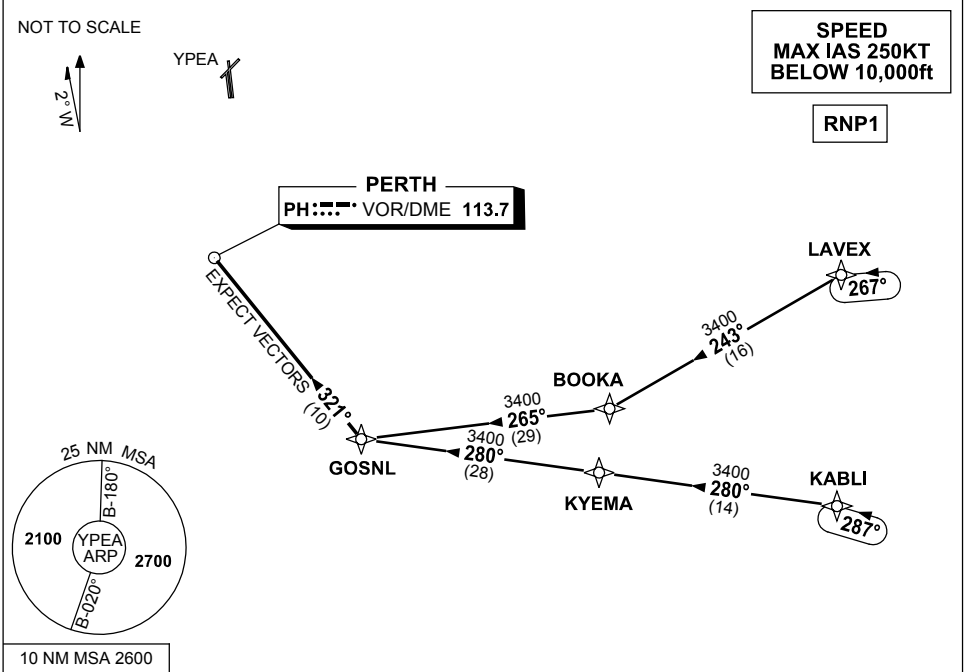


**STANDARD INSTRUMENT ARRIVAL (STAR)
PEARCE FOUR GOLF ARRIVAL (RNAV)
PEARCE, WA (YPEA)**

13 JUN 2024

ATIS 340 136.4 316.1	DEP PEA CEN 123.3 135.9	APP PEA APP 130.2	TWR 118.3 257.8	FIA (AH) PH CEN 135.25	CTAF+AFRU (AH) 118.3	AWIS (AH) 316.1	Bearings are Magnetic Elevations in FEET AMSL
----------------------------	-------------------------------	-------------------------	--------------------	---------------------------	-------------------------	--------------------	--



TRANSITIONS:

- LAVEX: (NON-JET)**
- From LAVEX track 243° to BOOKA
 - Turn RIGHT, track 265° to GOSNL
 - Then follow ARRIVAL instructions

- KABLI: (JET)**
- From KABLI track 280° to KYEMA
 - Track 280° to GOSNL
 - Then follow ARRIVAL instructions

ARRIVAL: PEARCE FOUR GOLF

- From GOSNL, turn RIGHT, track 321° to PH VOR
- Expect radar vectors to YPEA

COMMUNICATIONS FAILURE: PROCEDURE IN IMC

- Squawk 7600, comply with vertical navigation requirements, but not below MSA.
- Track via the latest STAR clearance to the nominated runway, then fly the most suitable approach in accordance with ERSA EMERG Section 1.5.

Changes: LAVEX REPLACES GRENE, KABLI REPLACES BEVLY, VALIDITY INDICATOR, VAR, Editorial.

PEASR02-179