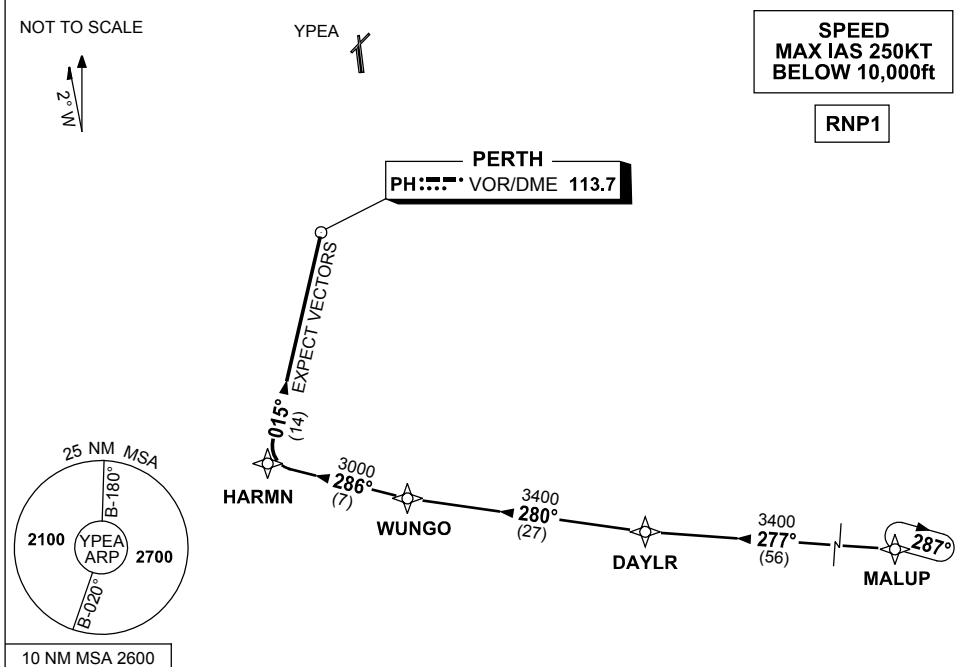


**STANDARD INSTRUMENT ARRIVAL (STAR)  
PEARCE FOUR WHISKEY ARRIVAL (RNAV)  
PEARCE, WA (YPEA)**

**13 JUN 2024**

ATIS 340 136.4 316.1	DEP PEA CEN 123.3 135.9	APP PEA APP 130.2	TWR 118.3 257.8	FIA (AH) PH CEN 135.25	CTAF+AFRU (AH) 118.3	AWIS (AH) 316.1	Bearings are Magnetic Elevations in FEET AMSL
----------------------------	-------------------------------	-------------------------	--------------------	---------------------------	-------------------------	--------------------	--



**TRANSITIONS:**

- MALUP:** (NON-JET)
- From MALUP track 277° to DAYLR
  - Turn RIGHT, track 280° to WUNGO
  - Then follow ARRIVAL instructions

**ARRIVAL:** PEARCE FOUR WHISKEY

- From WUNGO turn RIGHT
- Track 286° to HARMN
- Turn RIGHT, track 015° to PH VOR
- Expect radar vectors to YPEA

**COMMUNICATIONS FAILURE: PROCEDURE IN IMC**

- Squawk 7600, comply with vertical navigation requirements, but not below MSA.
- Track via the latest STAR clearance to the nominated runway, then fly the most suitable approach in accordance with ERSA EMERG Section 1.5.

Changes: MALUP REPLACES HAMTN, VALIDITY INDICATOR, VAR, Editorial.

PEASR01-179