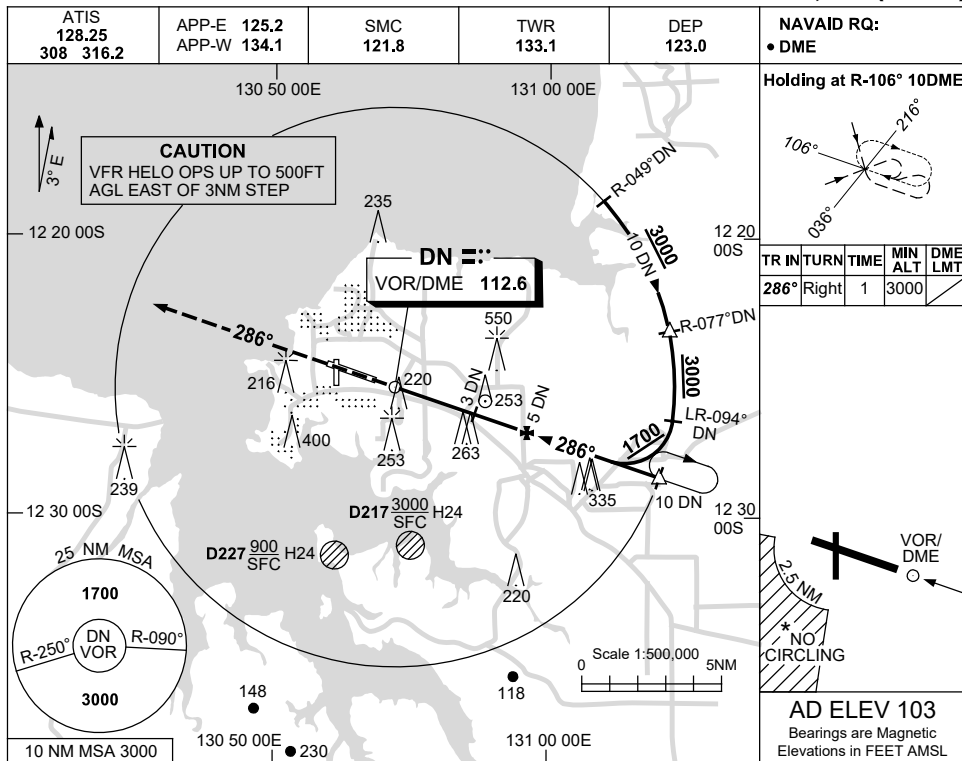


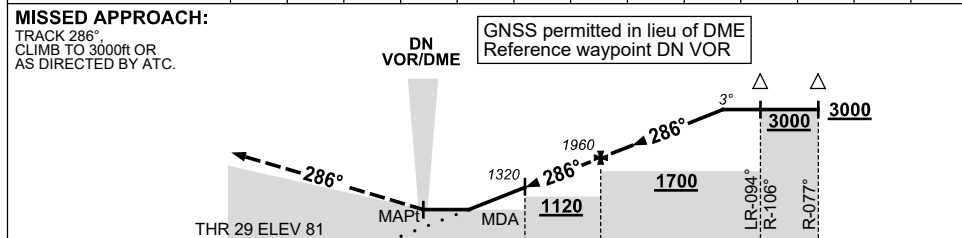
USE QNH

VOR-Z RWY 29
DARWIN, NT (YPDN)

5 SEP 2024



DIST TO DN DME	0.6	1	2	3	4	5	6	7	8	8.3		
ALT (3° APCH PATH)	570	690	1000	1320	1640	1960	2280	2600	2910	3000		



NOTES

1. ACFT MAY BE RADAR VECTORED TO FINAL.
2. DME 71X(112.4) NOT TO BE USED WITH THIS PROCEDURE.
- *3. SPECIAL ALTN MNM 800/4KM.
- *4. NO CIRCLING IN SECTOR SW OF RWY 11/29 AND RWY 18/36 BEYOND 2.5NM.

CATEGORY	A	B	C	D
S-I VOR/DME	570 (489-1.9)			
CIRCLING *	700 (597-2.4)	800 (697-4.0)	1000 (897-5.0)	
ALTERNATE‡	(1097-4.4)	(1197-6.0)	(1397-7.0)	

Changes: NOTE 2, Editorial.

PDNVO03-180