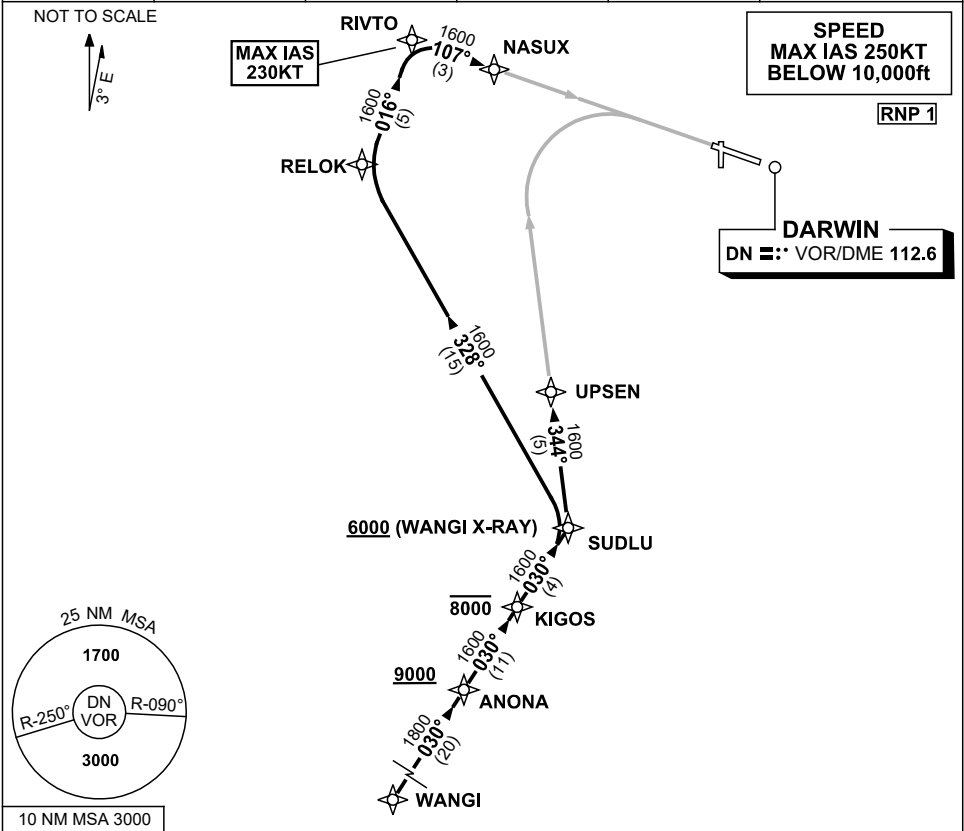


**STANDARD INSTRUMENT ARRIVAL (STAR)  
WANGI FOUR WHISKEY, X-RAY ARRIVALS (RNAV) RWY 11  
DARWIN, NT (YPDN)**

**30 NOV 2023**

ATIS 128.25 308 316.2	APP-E 125.2 APP-W 134.1	TWR 133.1	SMC 121.8		Bearings are Magnetic Elevations in FEET AMSL
-----------------------------	----------------------------	--------------	--------------	--	--



- |   |   |
|---|---|
| <p><b>ARRIVAL: WANGI FOUR</b></p> <p><b>RWY 11 WHISKEY:</b></p> <ul style="list-style-type: none"> <li>From WANGI track 030° to ANONA<br/><b>Cross</b> ANONA AT or ABV 9000ft</li> <li>Track 030° to KIGOS<br/><b>Cross</b> KIGOS AT or BLW 8000ft</li> <li>Track 030° to SUDLU</li> <li>Turn LEFT, track 344° to UPSEN for RNP W (AR) or RNP S (AR) RWY 11 approach</li> </ul> | <p><b>RWY 11 X-RAY:</b></p> <ul style="list-style-type: none"> <li>From WANGI track 030° to ANONA<br/><b>Cross</b> ANONA AT or ABV 9000ft</li> <li>Track 030° to KIGOS<br/><b>Cross</b> KIGOS AT or BLW 8000ft</li> <li>Track 030° to SUDLU<br/><b>Cross</b> SUDLU AT or ABV 6000ft</li> <li>Turn LEFT, track 328° to RELOK</li> <li>Turn RIGHT track 016° to RIVTO,<br/>MAX IAS 230KT from RIVTO</li> <li>Turn RIGHT track 107° to NASUX for RNP X (AR) or RNP Y (AR) RWY 11 approach</li> </ul> |
|---|---|

**COMMUNICATIONS FAILURE: PROCEDURE IN IMC**

- Squawk 7600, comply with vertical navigation requirements, but not below MSA.
- Track via the latest STAR clearance to the nominated runway, then fly the most suitable approach in accordance with ERSA EMERG Section 1.5.

Changes: RIVTO REPLACES ALLOT, RELOK REPLACES GIVEN, SUDLU REPLACES KINGS, Editorial.

PDNSR08-177