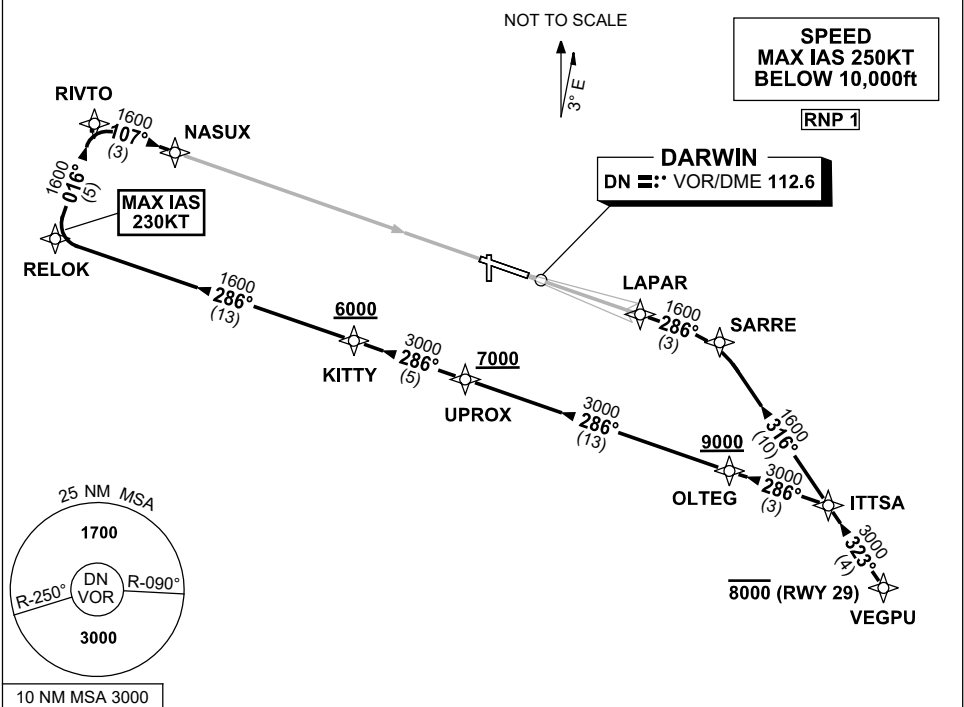


**STANDARD INSTRUMENT ARRIVAL (STAR)  
VEGPU NINE ALPHA ARRIVAL (RNAV)  
DARWIN, NT (YPDN)**

**30 NOV 2023**

ATIS 128.25 308 316.2	APP-E 125.2 APP-W 134.1	TWR 133.1	SMC 121.8		Bearings are Magnetic Elevations in FEET AMSL
-----------------------------	----------------------------	--------------	--------------	--	--



**ARRIVAL: VEGPU NINE ALPHA**

**RWY 11:**

- From VEGPU track 323° to ITTSA
- Turn LEFT, track 286° to OLTEG  
**Cross** OLTEG AT or ABV 9000ft
- Track 286° to UPROX  
**Cross** UPROX AT or ABV 7000ft
- Track 286° to KITTY  
**Cross** KITTY AT or ABV 6000ft
- Track 286° to RELOK  
MAX IAS 230KT from RELOK
- Turn RIGHT track 016° to RIVTO
- Turn RIGHT track 107° to NASUX for VOR or NDB RWY 11 approach

**RWY 29:**

- **Cross** VEGPU AT or BLW 8000ft
- From VEGPU, track 323° to ITTSA
- Turn LEFT, track 316° to SARRE
- Turn LEFT, track 286° to LAPAR for ILS or LOC RWY 29 approach

**COMMUNICATIONS FAILURE: PROCEDURE IN IMC**

- Squawk 7600, comply with vertical navigation requirements, but not below MSA.
- Track via the latest STAR clearance to the nominated runway, then fly the most suitable approach in accordance with ERSA EMERG Section 1.5.

Changes: RIVTO REPLACES ALLOT, RELOK REPLACES GIVEN, VALIDITY NUMBER, Editorial.

PDNSR06-177