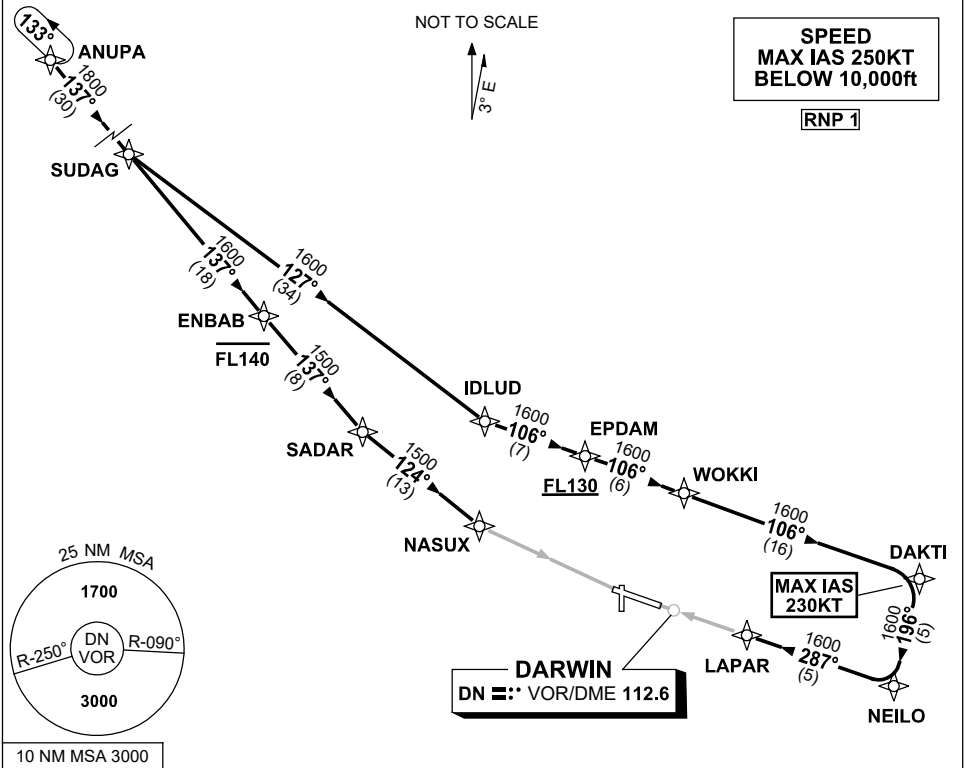


**STANDARD INSTRUMENT ARRIVAL (STAR)
ANUPA ONE X-RAY ARRIVAL (RNAV)
DARWIN, NT (YPDN)**

30 NOV 2023

ATIS 128.25 308 316.2	APP-E 125.2 APP-W 134.1	TWR 133.1	SMC 121.8		Bearings are Magnetic Elevations in FEET AMSL
-----------------------------	----------------------------	--------------	--------------	--	--



ARRIVAL: ANUPA ONE X-RAY

RWY 11:

- From ANUPA track 137° to SUDAG
- Track 137° to ENBAB
 Cross ENBAB AT or BLW FL140
- Track 137° to SADAR
- Turn LEFT, track 124° to NASUX for RNP X (AR) or RNP Y (AR) RWY 11 approach

RWY 29:

- From ANUPA track 137° to SUDAG
- Turn LEFT, track 127° to IDLUD
- Turn LEFT, track 106° to EPDAM
 Cross EPDAM AT or ABV FL130
- Track 106° to WOKKI
- Track 106° to DAKTI
 MAX IAS 230KT from DAKTI
- Turn RIGHT, track 196° to NEILO
- Turn RIGHT, track 287° to LAPAR for RNP X (AR) or RNP Y (AR) RWY 29 approach

COMMUNICATIONS FAILURE: PROCEDURE IN IMC

- Squawk 7600, comply with vertical navigation requirements, but not below MSA.
- Track via the latest STAR clearance to the nominated runway, then fly the most suitable approach in accordance with ERSA EMERG Section 1.5.

Changes: ANUPA REPLACES DONYA, CHART TITLE, Editorial.

PDNSR01-177