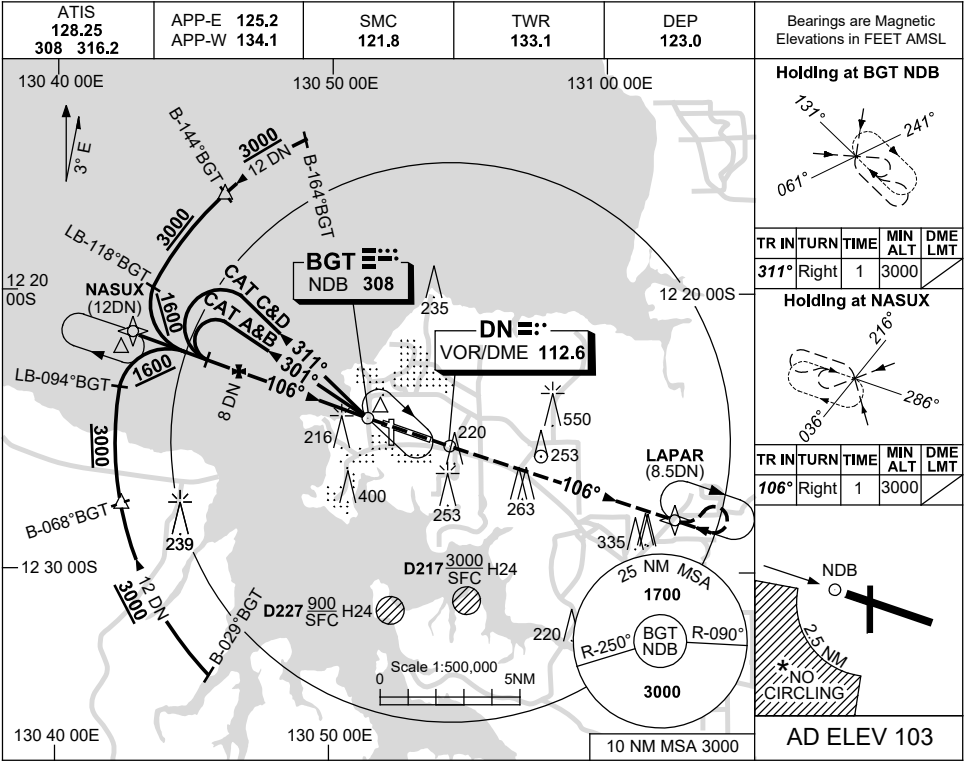


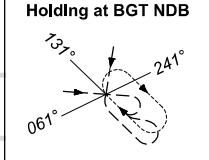
USE QNH

NDB-Z RWY 11  
**DARWIN, NT (YPDN)**

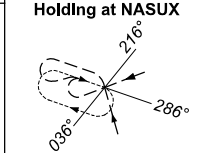
5 SEP 2024



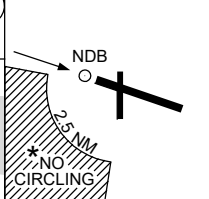
Bearings are Magnetic  
 Elevations in FEET AMSL



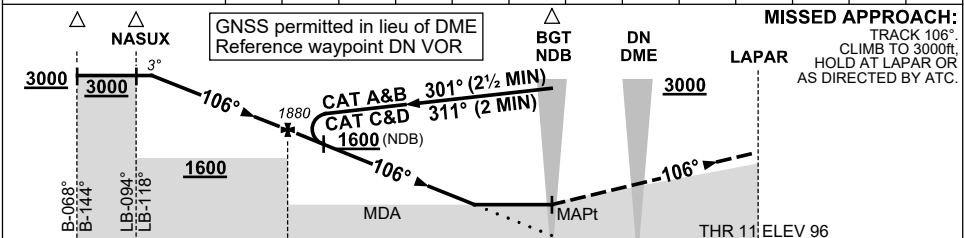
TR	IN	TURN	TIME	MIN	DME
311°	Right	1	3000	LMT	



TR	IN	TURN	TIME	MIN	DME
106°	Right	1	3000	LMT	



DIST BY DME	11.5	11	10	9	8	7	6	5	4	3.7
ALT (3° APCH PATH)	3000	2840	2520	2200	1880	1560	1240	930	610	520



**MISSED APPROACH:**  
 TRACK 106°.  
 CLIMB TO 3000ft.  
 HOLD AT LAPAR OR  
 AS DIRECTED BY ATC.

NM BY DME: 12, 12, 8, 0, 8.5

- NOTES**
- MAX IAS: INITIAL : 210KT.
  - ACFT MAY BE RADAR VECTORED TO FINAL.
  - DME 71X(112.4) NOT TO BE USED WITH THIS PROCEDURE.
  - SPECIAL ALTN MNM 800/4 KM.
  - NO CIRCLING IN SECTOR SW OF RWY 11/29 AND RWY 18/36 BEYOND 2.5NM.

CATEGORY	A	B	C	D
S-I NDB		560 (457-2.6)		
S-I NDB/DME		520 (417-2.3)		
CIRCLING *	700 (597-2.4)		800 (697-4.0)	1000(897-5.0)
ALTERNATE *	(1097-4.4)		(1197-6.0)	(1397-7.0)

Changes: NOTE 3, Editorial.

PDNNB01-180