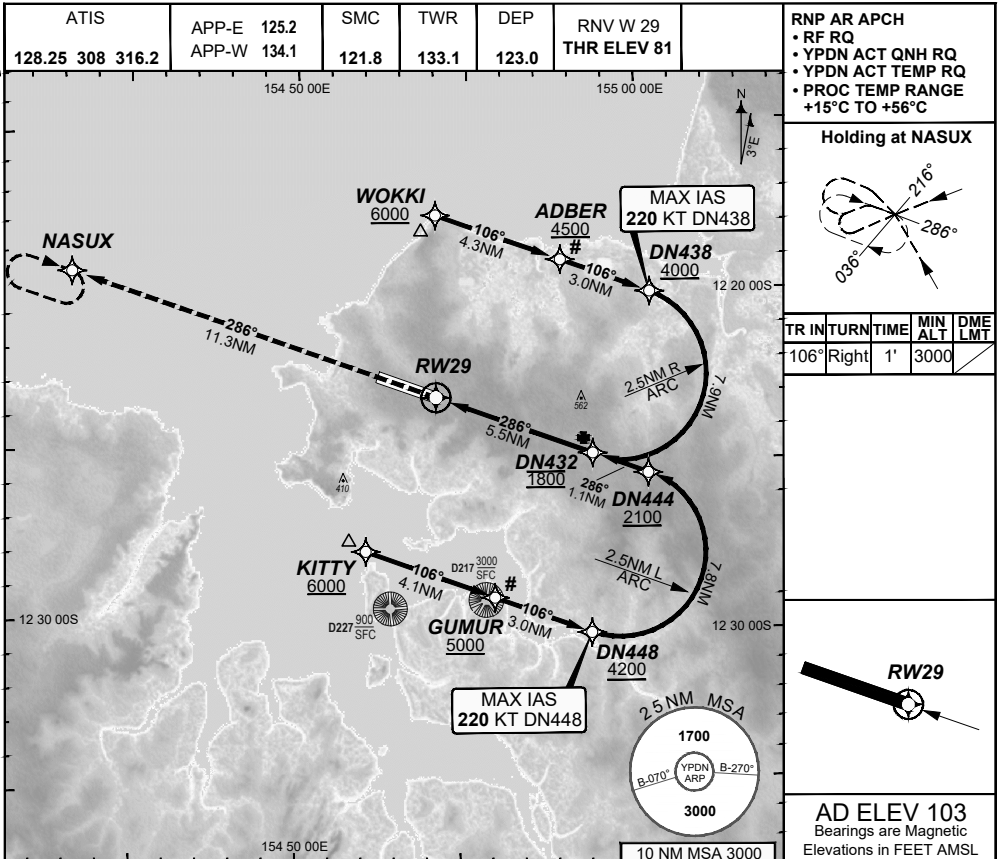


**FOR CASA APPROVED
OPERATORS ONLY
USE QNH**

**RNP W RWY 29 (AR)
DARWIN, NT (YPDN)**

28 NOV 2024



	DN432	DN444	DN438				
ALT (2.9° APCH PATH)	1800	2139	4232				
MISSED APPROACH: Climb to 3000FT or as directed by ATC via the RNP AR Missed Approach track to NASUX.							
	NASUX	MAP1 RWY29	FAF DN432				4000 DN438 (13.4NM) 2100 DN444 (6.6NM)
	TCH 51 FT THR 29 ELEV 81	MAP1	GP 2.9° 1800		800		
	11.3	0	5.5				NM FM THR

CATEGORY	A	B	C	D
RNP (0.30)	N/A		DA(H) 500 (419 - 2.4) 1.5 HIALS	DA(H) 500 (419 - 2.4) 1.5 HIALS
RNP (0.15)			DA(H) 444 (363 - 2.1) 1.2 HIALS	DA(H) 444 (363 - 2.1) 1.2 HIALS
CIRCLING			NOT AUTHORISED	NOT AUTHORISED
ALTERNATE				

NOTES

1. PAPI not coincident with VPA.
2. RNP 0.3 RQ FROM WOKKI TO DN432.
3. RNP 0.3 RQ FROM KITTY TO DN432.
4. MIN MAP GRAD 4.1% TO 3000FT per ATC.
- 5#. Latest Intercept Point (LIP)

202408011220 General Electric Company Proprietary & Confidential Information

Changes: D256, D214, D213 REMOVED, Editorial.

PDNGN19-181

DO NOT USE FOR NAVIGATION

Prepared by GE Aerospace - ICAO Doc 9905 Compliant

© Airservices Australia

