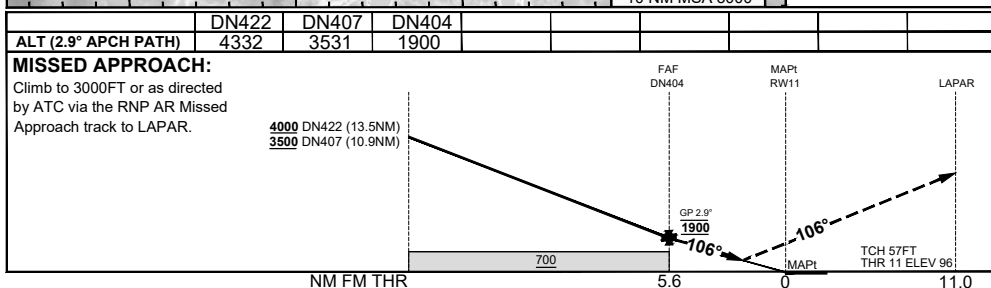
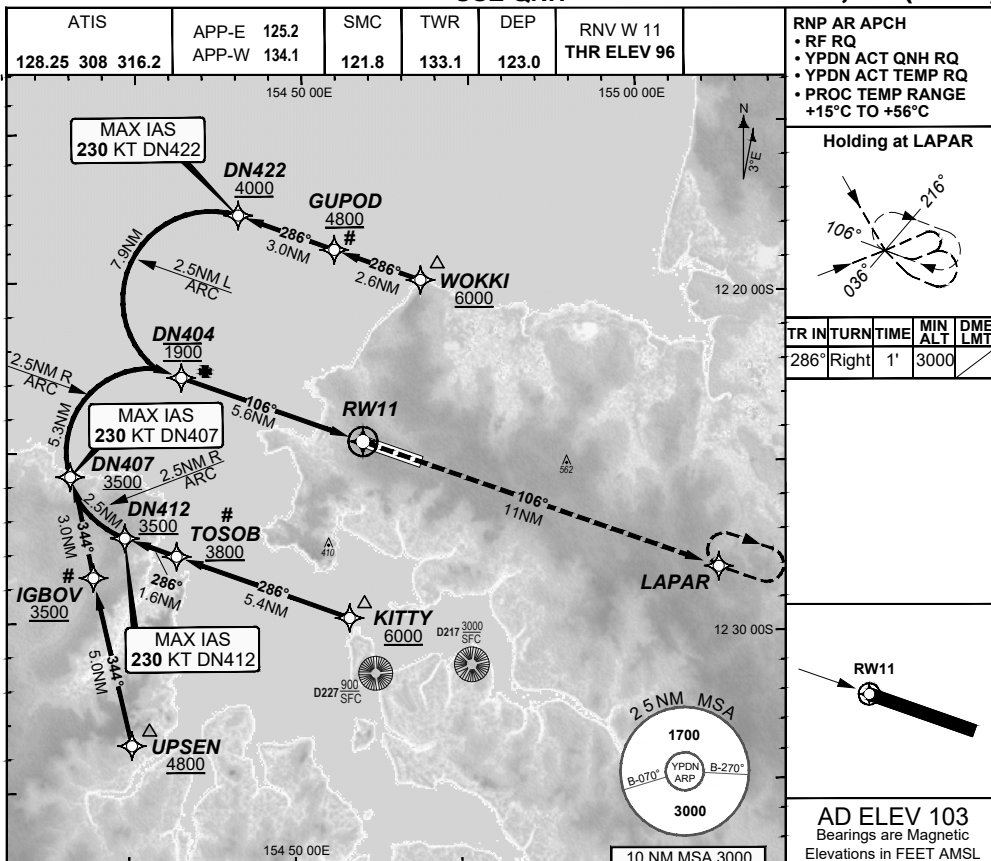


**FOR CASA APPROVED
OPERATORS ONLY
USE QNH**

**RNP W RWY 11 (AR)
DARWIN, NT (YPDN)**

28 NOV 2024



CATEGORY	A	B	C	D
RNP (0.30)	N/A		DA(H) 487 (391 - 2.2)	DA(H) 487 (391 - 2.2)
RNP (0.15)			DA(H) 436 (340 - 1.9)	DA(H) 436 (340 - 1.9)
CIRCLING			NOT AUTHORISED	NOT AUTHORISED
ALTERNATE				

- NOTES**
- PAPI not coincident with VPA.
 - RNP 0.3 RQ FROM WOKKI TO DN404.
 - RNP 0.3 RQ FROM UPSSEN TO DN404.
 - RNP 0.3 RQ FROM KITTY TO DN404.
 - MIN MAP GRAD 4.2% TO 3000FT per ATC.
 - 6#. Latest Intercept Point (LIP)

202408011219 General Electric Company Proprietary & Confidential Information

Changes: D256, D214, D213 REMOVED, Editorial.

PDNGN18-181

DO NOT USE FOR NAVIGATION

Prepared by GE Aerospace - ICAO Doc 9905 Compliant

© Airservices Australia

