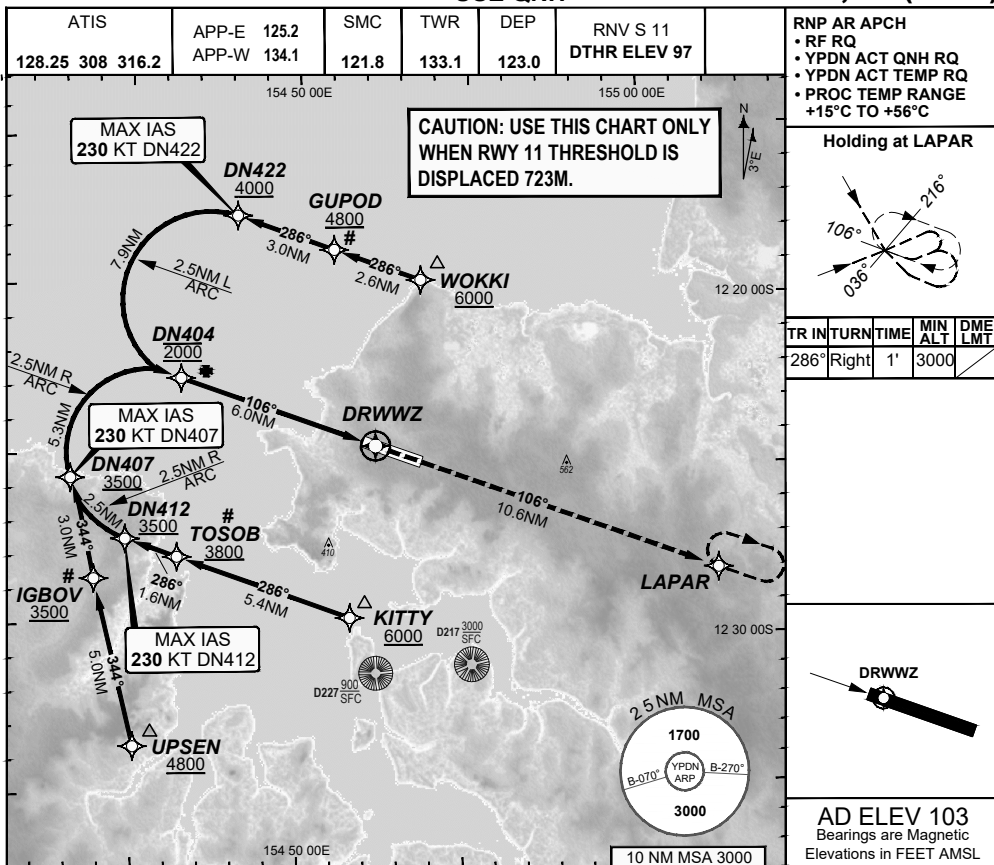


**FOR CASA APPROVED
OPERATORS ONLY
USE QNH**

**RNP S RWY 11 (AR)
DARWIN, NT (YPDN)**

28 NOV 2024

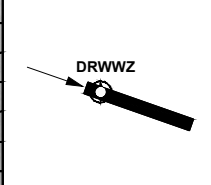
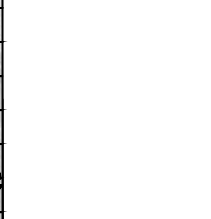


RNP AR APCH

- RF RQ
- YPDN ACT QNH RQ
- YPDN ACT TEMP RQ
- PROC TEMP RANGE +15°C TO +56°C

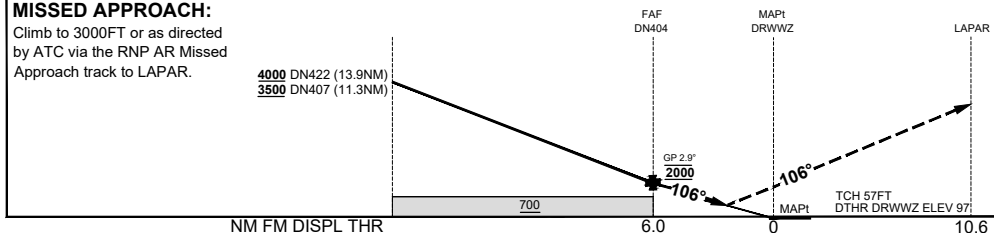
Holding at LAPAR

TR IN	TURN	TIME	MIN ALT	DME LMT
286°	Right	1'	3000	



AD ELEV 103
Bearings are Magnetic
Elevations in FEET AMSL

	DN422	DN407	DN404				
ALT (2.9° APCH PATH)	4432	3631	2000				



CATEGORY	A	B	C	D
RNP (0.30)			DA(H) 498 (401 - 2.3)	DA(H) 498 (401 - 2.3)
	N/A		NOT AUTHORISED	NOT AUTHORISED
CIRCLING			NOT AUTHORISED	NOT AUTHORISED
ALTERNATE				

- NOTES**
1. PAPI not coincident with VPA.
 2. RNP 0.3 RQ FROM WOKKI TO DN404.
 3. RNP 0.3 RQ FROM UPSEN TO DN404.
 4. RNP 0.3 RQ FROM KITTY TO DN404.
 5. MIN MAP GRAD 4.2% TO 3000FT per ATC.
 - 6#. Latest Intercept Point (LIP)

202408011217 General Electric Company Proprietary & Confidential Information

Changes: D256, D214, D213 REMOVED, Editorial.

PDNGN16-181

DO NOT USE FOR NAVIGATION

Prepared by GE Aerospace - ICAO Doc 9905 Compliant

