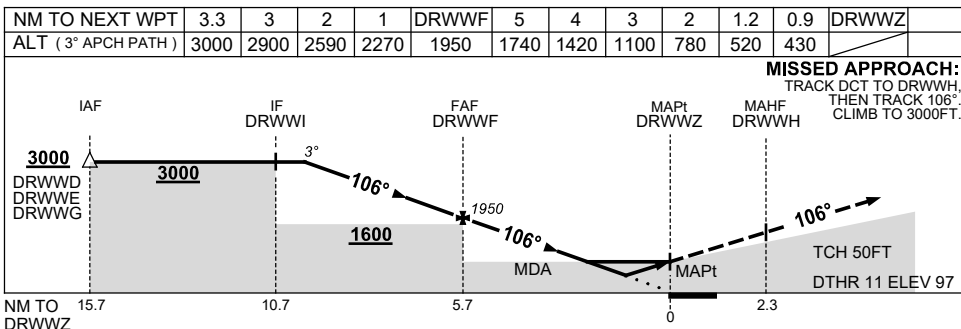
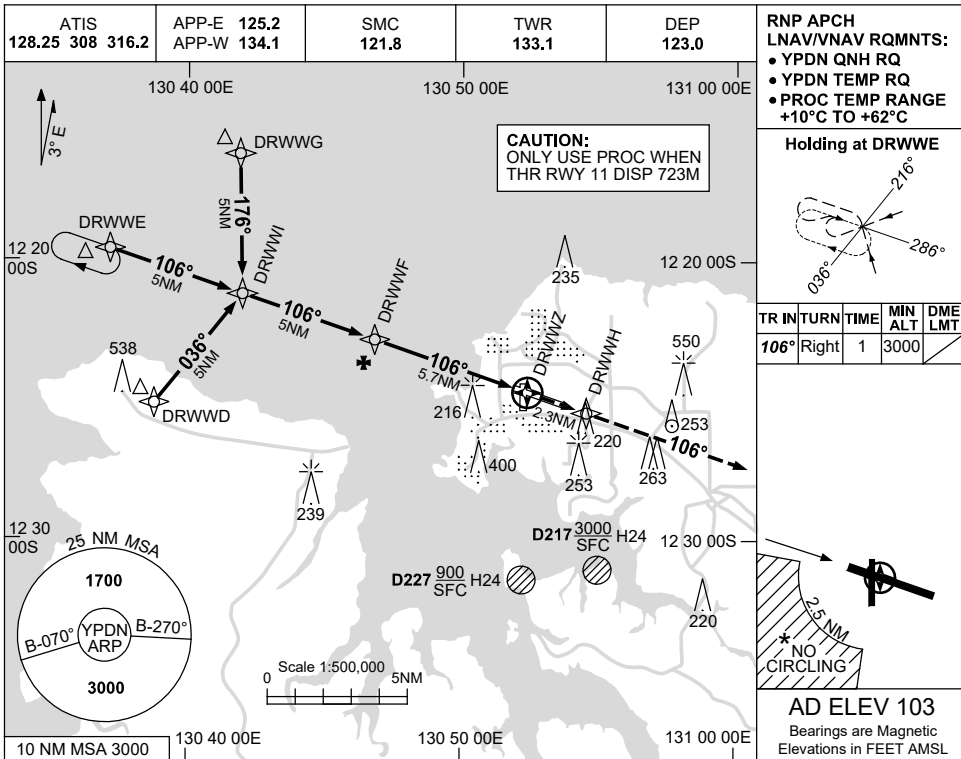


USE QNH

RNP T RWY 11
DARWIN, NT (YPDN)

1 DEC 2022



NOTES

CATEGORY	A	B	C	D
LNAV/VNAV		430	(333-1.9)	
LNAV		520	(417-2.3)	
CIRCLING *	700 (597-2.4)		800 (697-4.0)	1000 (897-5.0)
ALTERNATE	(1097-4.4)		(1197-6.0)	(1397-7.0)

1. MAX IAS:
 INITIAL : 210KT.
 * 2. NO CIRCLING IN SECTOR
 SW OF RWY 11/29 AND
 RWY 18/36 BEYOND 2.5NM.

Changes: MAG VAR.

PDNGN10-173