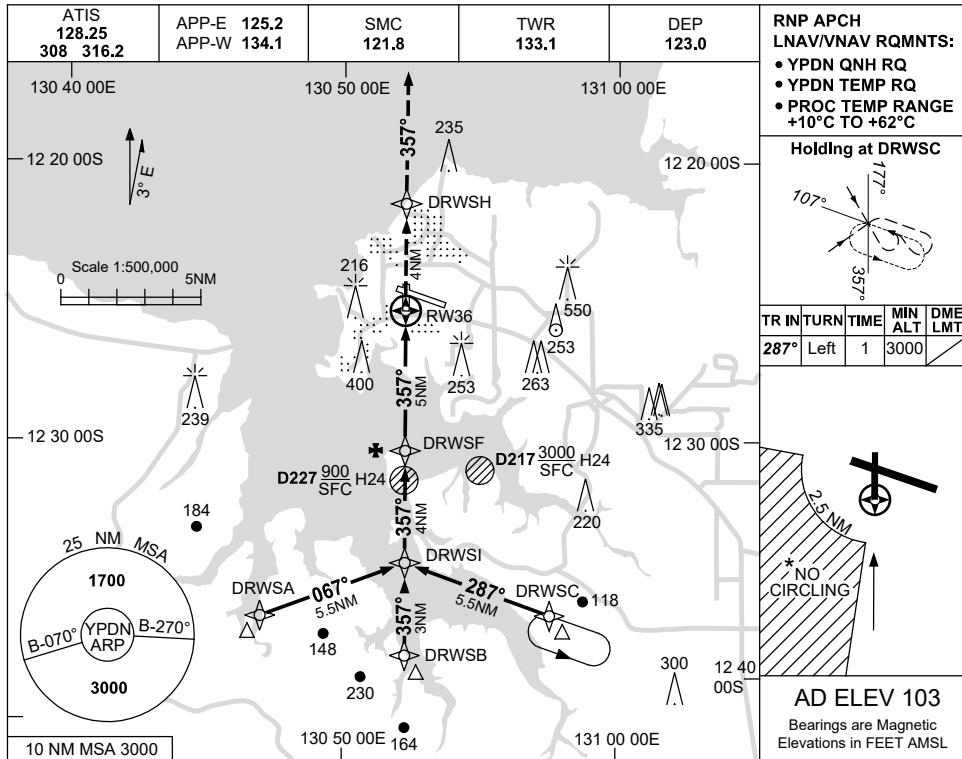


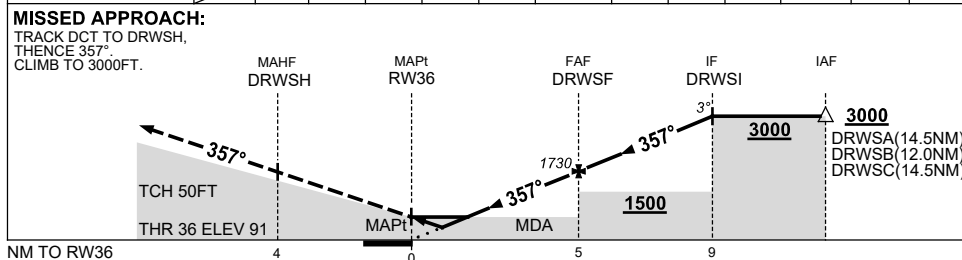
USE QNH

RNP RWY 36  
**DARWIN, NT (YPDN)**

1 DEC 2022



NM TO NEXT WPT	RW36	0.9	1.2	2	3	4	DRWSF	1	2	3	DRWSI		
ALT (3° APCH PATH)		420	520	780	1100	1410	1730	2050	2370	2690	3000		



**NOTES**

CATEGORY	A	B	C	D
LNAV/VNAV		420 (329-1.8)		NOT APPLICABLE
LNAV		520 (429-2.4)		
CIRCLING *	700 (597-2.4)		800 (697-4.0)	
ALTERNATE	(1097-4.4)		(1197-6.0)	

\* 1. NO CIRCLING IN SECTOR SW OF RWY 11/29 AND RWY 18/36 BEYOND 2.5NM.  
**CAUTION:** GAS PLUME APPROACHING FAF.

Changes: MAG VAR.

PDNGN01-173