

STANDARD INSTRUMENT DEPARTURES (SID)  
VANDI SEVEN DEPARTURE (NON-JET) (RNAV)  
**DARWIN, NT (YPDN)**

13 JUN 2024

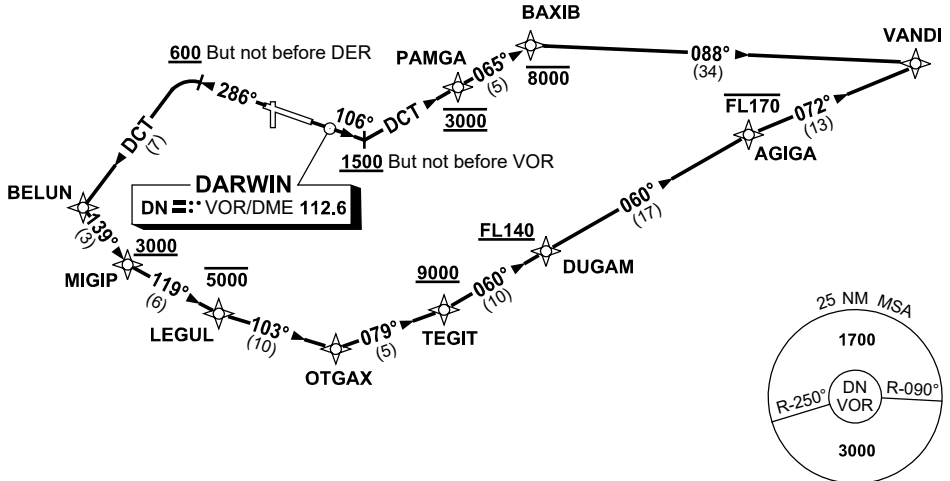
ATIS 128.25 308 316.2	ACD 126.8	SMC 121.8	TWR 133.1	APP-E 125.2 APP-W 134.1	Bearings are Magnetic Elevations in FEET AMSL
-----------------------------	--------------	--------------	--------------	----------------------------	--

NOT TO SCALE



**SPEED  
MAX IAS 250KT  
BELOW 10,000FT**

**RNP 1**



10 NM MSA 3000

**VANDI SEVEN DEPARTURE**

**RWY 11**

- GRAD 3.3%
- Track 106°
- AT or ABV 1500ft, but not before VOR  
turn LEFT, track DCT to PAMGA  
**Cross** PAMGA AT 3000ft
- Track 065° to BAXIB  
**Cross** BAXIB AT or BLW 8000ft
- Turn RIGHT, track 088° to VANDI

**RWY 29**

- GRAD 3.3% (GRAD 7% to 3000ft)
- Track 286°
- AT or ABV 600ft, but not before DER,  
turn LEFT track DCT to BELUN
- Turn LEFT, track 139° to MIGIP  
**Cross** MIGIP AT or ABV 3000ft
- Turn LEFT, track 119° to LEGUL  
**Cross** LEGUL AT or BLW 5000ft
- Turn LEFT, track 103° to OTGAX
- Turn LEFT, track 079° to TEGIT  
**Cross** TEGIT AT or ABV 9000ft
- Turn LEFT, track 060° to DUGAM  
**Cross** DUGAM AT or ABV FL140
- Track 060° to AGIGA  
**Cross** AGIGA AT or BLW FL170
- Turn RIGHT, track 072° to VANDI

Changes: VALIDITY NR, AGIGA WPT.

PDNDP10-179