

STANDARD INSTRUMENT DEPARTURES (SID)
 RUPEG TWO DEPARTURE (JET) (RNAV)
DARWIN, NT (YPDN)

13 JUN 2024

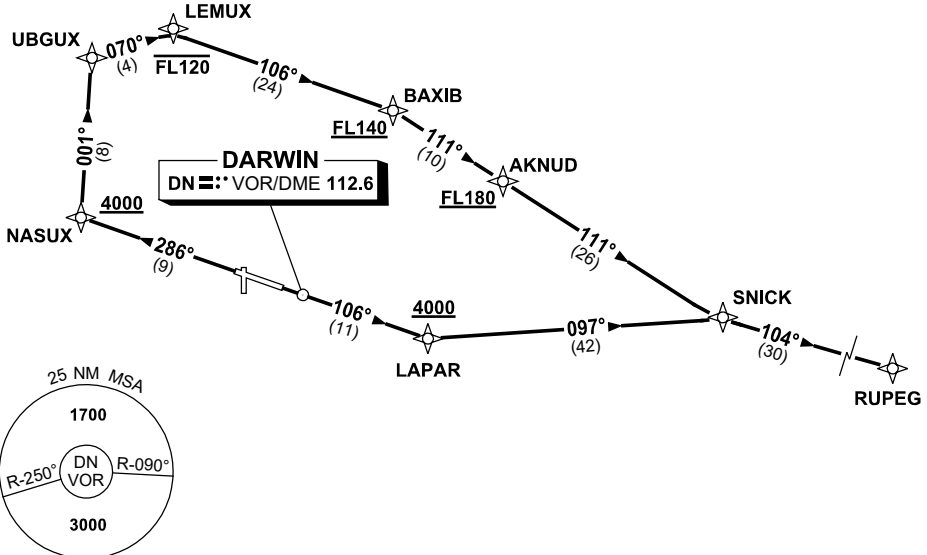
ATIS 128.25 308 316.2	ACD 126.8	SMC 121.8	TWR 133.1	APP-E 125.2 APP-W 134.1	Bearings are Magnetic Elevations in FEET AMSL
-----------------------------	--------------	--------------	--------------	----------------------------	--

NOT TO SCALE



**SPEED
 MAX IAS 250KT
 BELOW 10,000ft**

RNP 1



RUPEG TWO DEPARTURE

RWY 11

- Track 106° to LAPAR
Cross LAPAR AT or ABV 4000ft
- Turn LEFT, track 097° to SNICK
- Turn RIGHT, track 104° to RUPEG

RWY 29

- Track 286° to NASUX
Cross NASUX AT or ABV 4000ft
- Turn RIGHT, track 001° to UBGUX
- Turn RIGHT, track 070° to LEMUX
Cross LEMUX AT or BLW FL120
- Turn RIGHT, track 106° to BAXIB
Cross BAXIB AT or ABV FL140
- Turn RIGHT, track 111° to AKNUD
Cross AKNUD AT or ABV FL180
 (RQ GRAD TO AKNUD: 5.3%)
- Track 111° to SNICK
- Turn LEFT, track 104° to RUPEG

Changes: VALIDITY NR, AKNUD WPT, CROSSING ALTITUDE, GRAD.

PDNDP08-179