

STANDARD INSTRUMENT DEPARTURES (SID)
 OCTOB EIGHT DEPARTURE (JET) (RNAV)
DARWIN, NT (YPDN)

30 NOV 2023

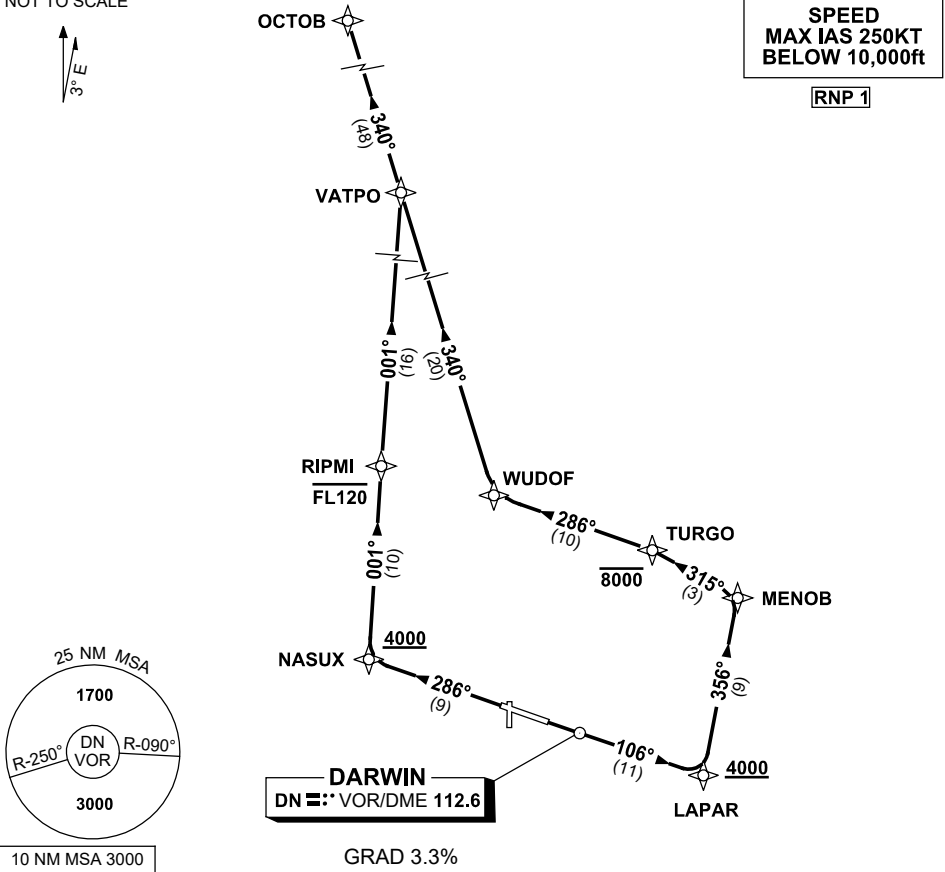
ATIS 128.25 308 316.2	ACD 126.8	SMC 121.8	TWR 133.1	APP-E 125.2 APP-W 134.1	Bearings are Magnetic Elevations in FEET AMSL
-----------------------------	--------------	--------------	--------------	----------------------------	--

NOT TO SCALE



**SPEED
 MAX IAS 250KT
 BELOW 10,000ft**

RNP 1



OCTOB EIGHT DEPARTURE

RWY 11

- Track 106° to LAPAR
Cross LAPAR AT or ABV 4000ft
- Turn LEFT, track 356° to MENOB
- Turn LEFT, track 315° to TURGO
Cross TURGO AT or BLW 8000ft
- Turn LEFT, track 286° to WUDOF
- Turn RIGHT, track 340° to VATPO
- Track 340° to OCTOB

RWY 29

- Track 286° to NASUX
Cross NASUX AT or ABV 4000ft
- Turn RIGHT, track 001° to RIPMI
Cross RIPMI AT or BLW FL120
- Track 001° to VATPO
- Turn LEFT track 340° to OCTOB

Changes: RIPMI REPLACES PORKY, VATPO REPLACES TUMBL, VALIDITY NUMBER, Editorial.

PDNDP07-177