

STANDARD INSTRUMENT DEPARTURES (SID)
 JULIE FIVE DEPARTURE (JET) (RNAV)
 DARWIN, NT (YPDN)

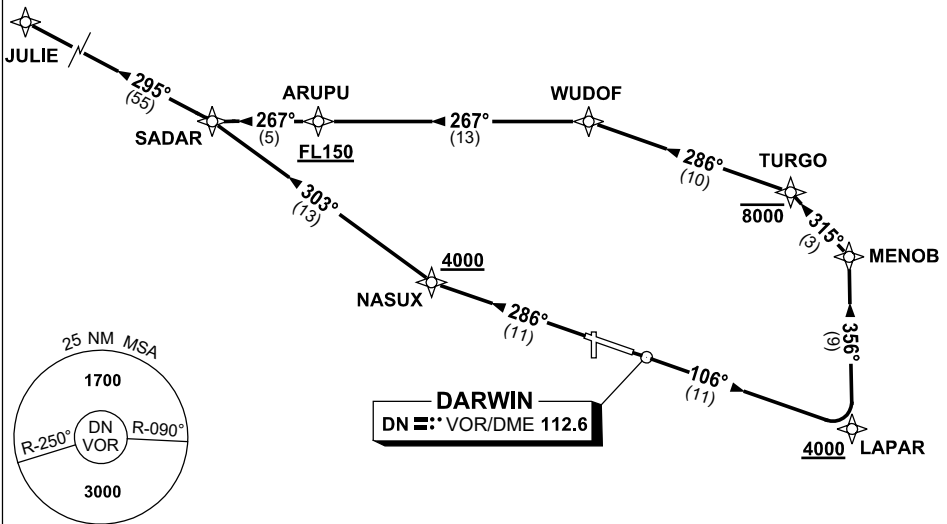
1 DEC 2022

ATIS 128.25 308 316.2	ACD 126.8	SMC 121.8	TWR 133.1	APP-E 125.2 APP-W 134.1	Bearings are Magnetic Elevations in FEET AMSL
-----------------------------	--------------	--------------	--------------	----------------------------	--

NOT TO SCALE



**SPEED
 MAX IAS 250KT
 BELOW 10,000FT**
RNP 1



10 NM MSA 3000

GRAD 3.3%

JULIE FIVE DEPARTURE

RWY 11

- Track 106° to LAPAR
Cross LAPAR AT or ABV 4000ft
- Turn LEFT, track 356° to MENOB
- Turn LEFT, track 315° to TURGO
Cross TURGO AT or BLW 8000ft
- Turn LEFT, track 286° to WUDOF
- Turn LEFT track 267° to ARUPU
Cross ARUPU AT or ABV FL150
- Track 267° to SADAR
- Turn RIGHT, track 295° to JULIE

RWY 29

- Track 286° to NASUX
Cross NASUX AT or ABV 4000ft
- Turn RIGHT, track 303° SADAR
- Turn LEFT, track 295° to JULIE