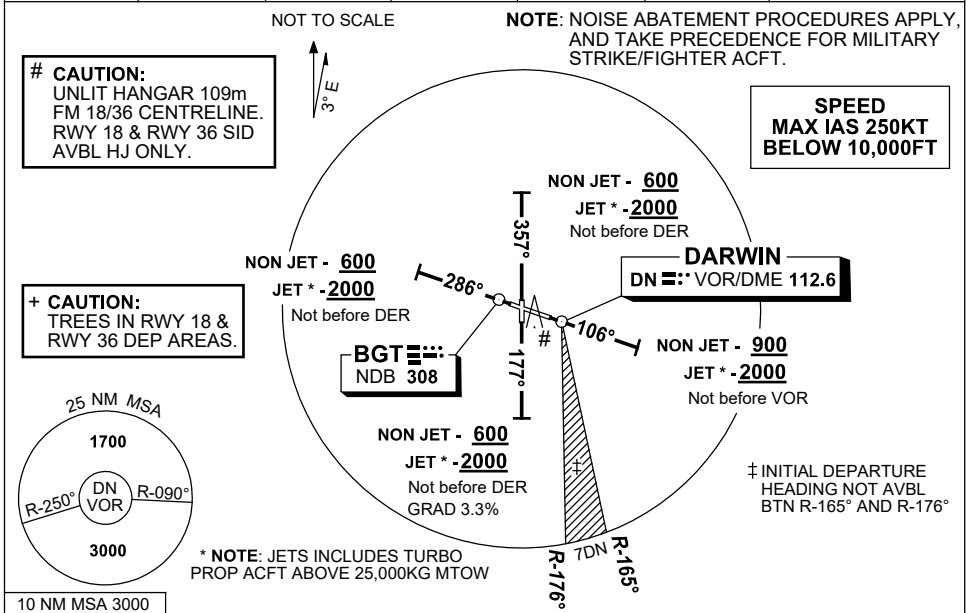


**STANDARD INSTRUMENT DEPARTURES (SID)  
DARWIN SEVEN DEPARTURE (RADAR)  
DARWIN, NT (YPDN)**

**1 DEC 2022**

ATIS <b>128.25</b> 308 316.2	ACD <b>126.8</b>	SMC <b>121.8</b>	TWR <b>133.1</b>	APP-E <b>125.2</b> APP-W <b>134.1</b>	DEP <b>123.0</b>	Bearings are Magnetic Elevations in FEET AMSL
------------------------------------	---------------------	---------------------	---------------------	--	---------------------	--



**DARWIN SEVEN DEPARTURE (RADAR)**

**RWY 11**

- Track 106°
- AT or ABV 900ft (**2000ft JET ACFT \***) but not before VOR, turn to assigned heading or track
- When instructed, contact Approach for Radar Vectors

**RWY 18 (HJ ONLY)**

- # TAKEOFF MINIMA REQUIREMENTS  
CEILING 50ft VIS 1000m  
or  
AIP ENR 1.5 Para 4.3  
WHICHEVER IS GREATER**
- Track 177°
  - AT or ABV 600ft (**2000ft JET ACFT \***) but not before DER, turn to assigned heading or track
  - When instructed, contact Approach for Radar Vectors

**RWY 29**

- Track 286°
- AT or ABV 600ft (**2000ft JET ACFT \***) but not before DER, turn to assigned heading or track
- When instructed, contact Approach for Radar Vectors

**RWY 36 (HJ ONLY)**

- # TAKEOFF MINIMA REQUIREMENTS  
CEILING 50ft VIS 700m  
or  
AIP ENR 1.5 Para 4.3  
WHICHEVER IS GREATER**
- Track 357°
  - AT or ABV 600ft (**2000ft JET ACFT \***) but not before DER, turn to assigned heading or track
  - When instructed, contact Approach for Radar Vectors

**COMMUNICATIONS FAILURE PROCEDURE**

- On recognition of communication failure
- Squawk 7600
  - Maintain last assigned vector for two minutes, and
  - CLIMB IF NECESSARY TO MINIMUM SAFE ALTITUDE, to maintain terrain clearance, then
  - proceed in accordance with the latest ATC route clearance acknowledged.

Changes: MAG VAR.

PDNDP01-173