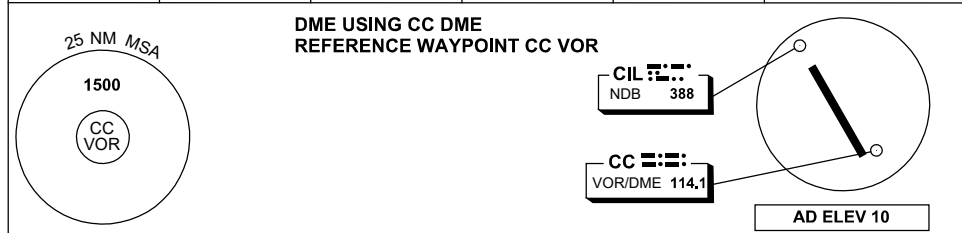


# DME or GNSS ARRIVAL PROCEDURES COCOS (KEELING) ISLANDS, AUSTRALIA (YPCC)

5 NOV 2020

AWIS 126.2	FIA BN HF INO-1	CTAF+AFRU 118.1	AFRU+PAL 118.1		Bearings are Magnetic Elevations in FEET AMSL
---------------	--------------------	--------------------	-------------------	--	--



<b>ALL ROUTES TO CC VOR or CIL NDB</b>		VOR or NDB <b>1500</b>	<b>MISSED APPROACH:</b> CLIMB ON TRACK TO 1500FT.
	NM TO CC VOR    25    11                          6                          0	<b>CIRCLING MINIMA</b>	<b>A,B: 610-2.4    C: 710-4.0    D: 800-5.0</b>
NM TO CC VOR    5.5    5    4                          3.3    3    2.7	ALT (3° APCH PATH)    1500    1360    1040                          800    710    610		