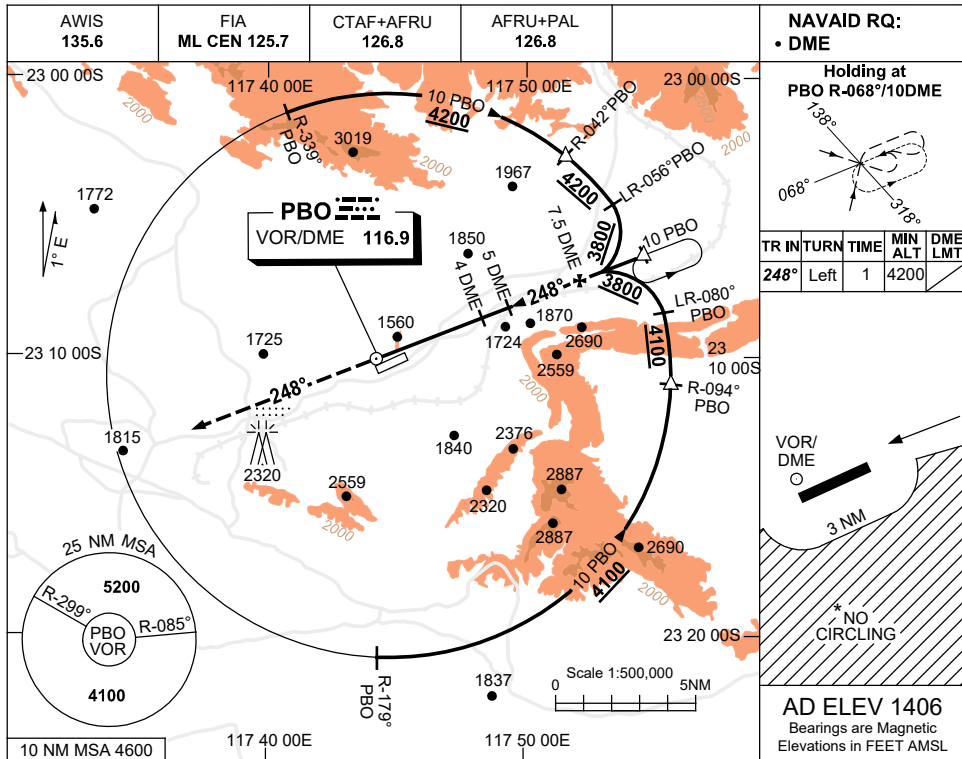


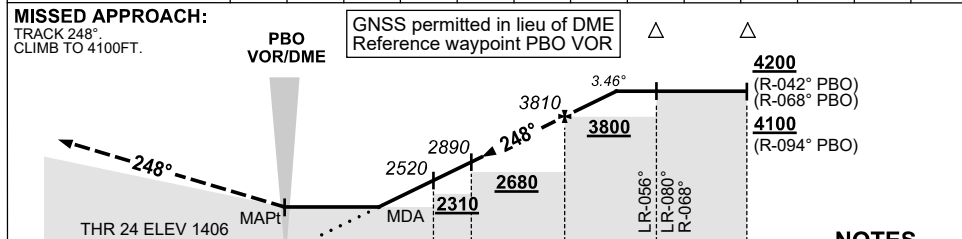
USE QNH

VOR RWY 24  
**PARABURDOO, WA (YPBO)**

23 MAR 2023



DIST BY DME	2.9	3	4	5	6	7	7.5	8	8.6				
ALT (3.46° APCH PATH)	2100	2150	2520	2890	3260	3620	3810	3990	4200				



**NOTES**

1. MAX IAS:  
 HOLDING: 210KT.  
 INITIAL : 210KT.
- \*2. NO CIRCLING S OF RWY 06/24 BEYOND 3NM.
3. APCH PATH ANGLE DOES NOT COINCIDE WITH PAPI ON GLIDE SLOPE INDICATION.
4. COLOUR: SEE SPEC NOTICES.

CATEGORY	A	B	C	D
S-I VOR/DME	<b>2100</b> (694-3.5)			
CIRCLING*	<b>2340</b> (934-2.4)	<b>2500</b> (1094-4.0)	<b>2570</b> (1164-5.0)	
ALTERNATE	(1434-4.4)	(1594-6.0)	(1664-7.0)	

Changes: UNICOM REMOVED. PBOV002-174