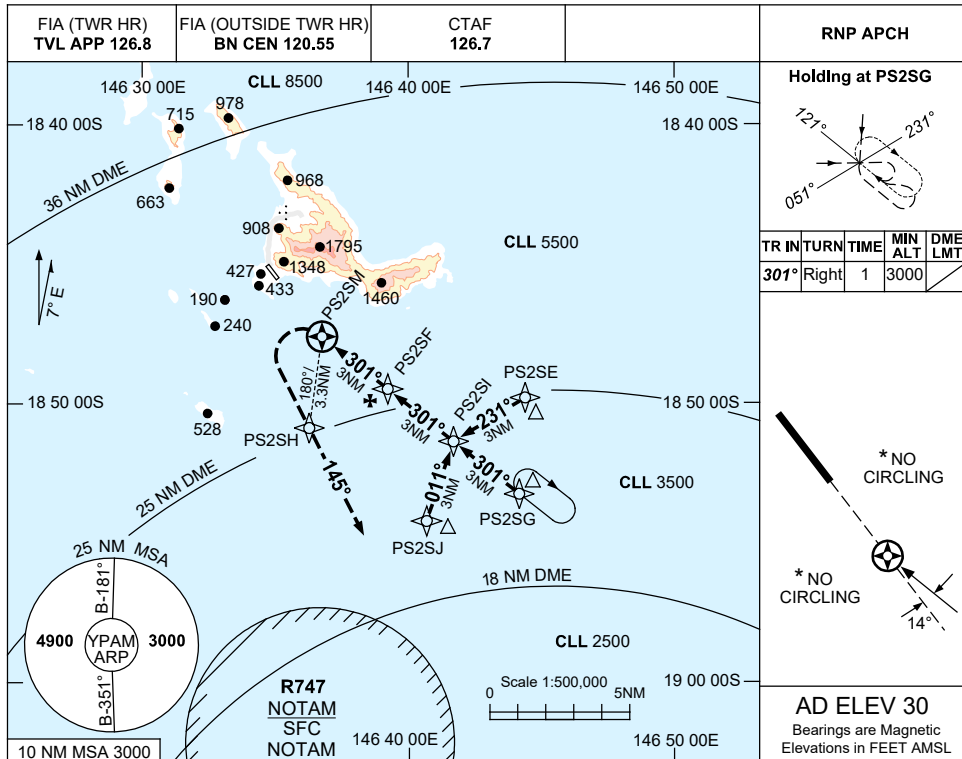


USE QNH

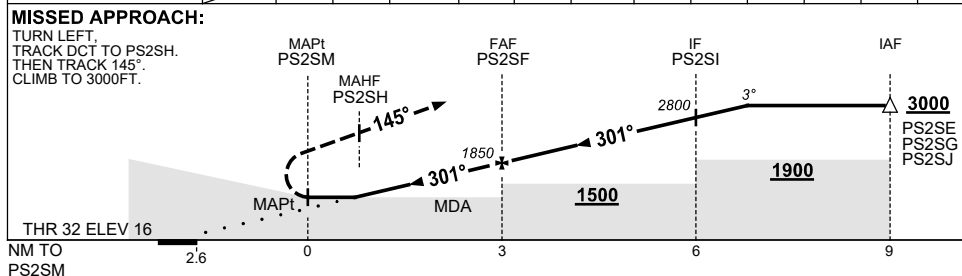
RNP Z RWY 32

7 SEP 2023

PALM ISLAND, QLD (YPAM)



| | | | | | | | | | | | |
|--------------------|-------|------|------|-------|------|------|-------|------|--|--|--|
| NM TO NEXT WPT | PS2SM | 1 | 2 | PS2SF | 1 | 2 | PS2SI | 0.6 | | | |
| ALT (3° APCH PATH) | | 1210 | 1530 | 1850 | 2170 | 2490 | 2800 | 3000 | | | |



NOTES

| CATEGORY | A | B | C | D |
|-----------|----------------|---|----------------|---|
| LNAV | 890 (874-5.0) | | NOT APPLICABLE | |
| CIRCLING* | NOT AUTHORISED | | | |
| ALTERNATE | NOT APPLICABLE | | | |

1. MAX IAS:
INITIAL : 170KT.
MAP TURN: 130KT.
- * 2. NO CIRCLING
3. **COLOUR:** SEE SPEC NOTICES.

Changes: MSA, WPT NAMING CONVENTION, MINIMA, VPA, Editorial.

PAMGN02-176