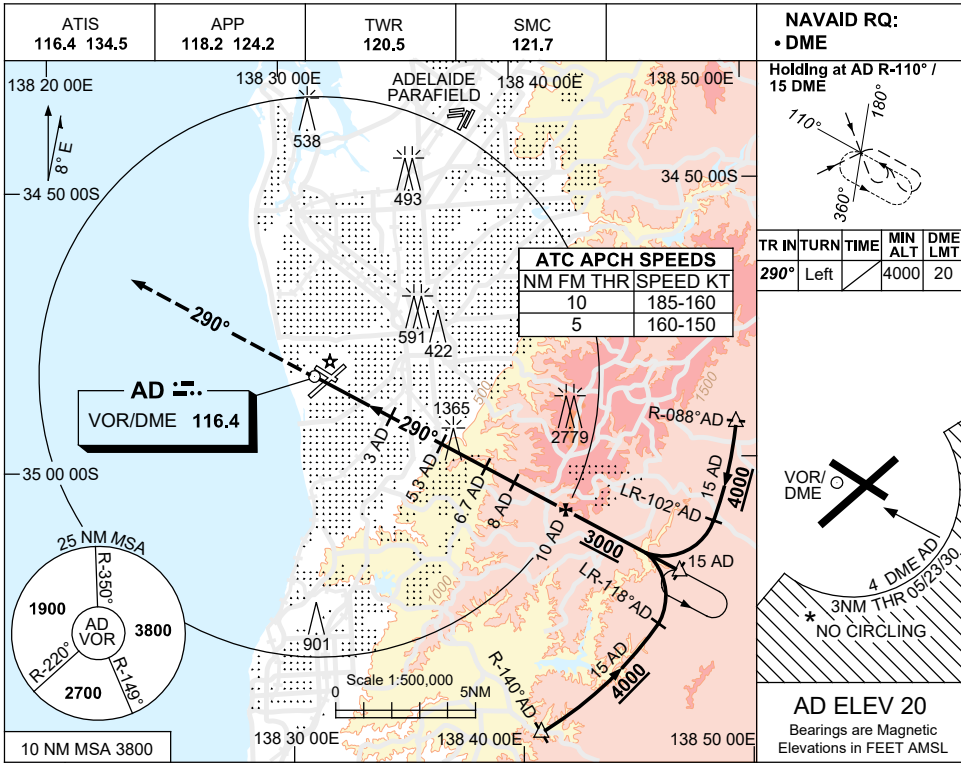


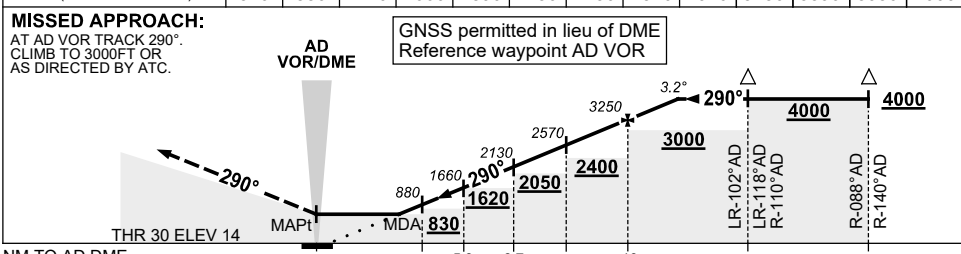
USE QNH

VOR RWY 30
ADELAIDE, SA (YPAD)

24 MAR 2022



| | | | | | | | | | | | | | |
|----------------------|-----|-----|------|------|------|------|------|------|------|------|------|------|------|
| DIST TO AD DME | 2 | 3 | 4 | 5.3 | 6 | 6.7 | 7 | 8 | 9 | 10 | 11 | 12 | 12.2 |
| ALT (3.2° APCH PATH) | 520 | 880 | 1220 | 1660 | 1890 | 2130 | 2230 | 2570 | 2910 | 3250 | 3590 | 3930 | 4000 |



- NOTES**
- * 1. NO CIRCLING S OF RWY 05/23 BEYOND 4 DME AD OR BEYOND 3NM FM THR 05/23/30.
 - * 2. SPECIAL ALTN MNM 850/4.0 KM.
 - 3. APCH PATH ANGLE DOES NOT COINCIDE WITH PAPI ON GLIDE SLOPE INDICATION.
 - 4. COLOUR: SEE SPEC NOTICES.

| CATEGORY | A | B | C | D |
|-------------|---------------|---|----------------|----------------|
| S-I VOR/DME | 520 (500-2.7) | | | |
| CIRCLING * | 900 (880-2.4) | | 1000 (980-4.0) | 1000 (980-5.0) |
| ALTERNATE* | (1380-4.4) | | (1480-6.0) | (1480-7.0) |

Changes: HOLDING TEXT.

PADVO05-170