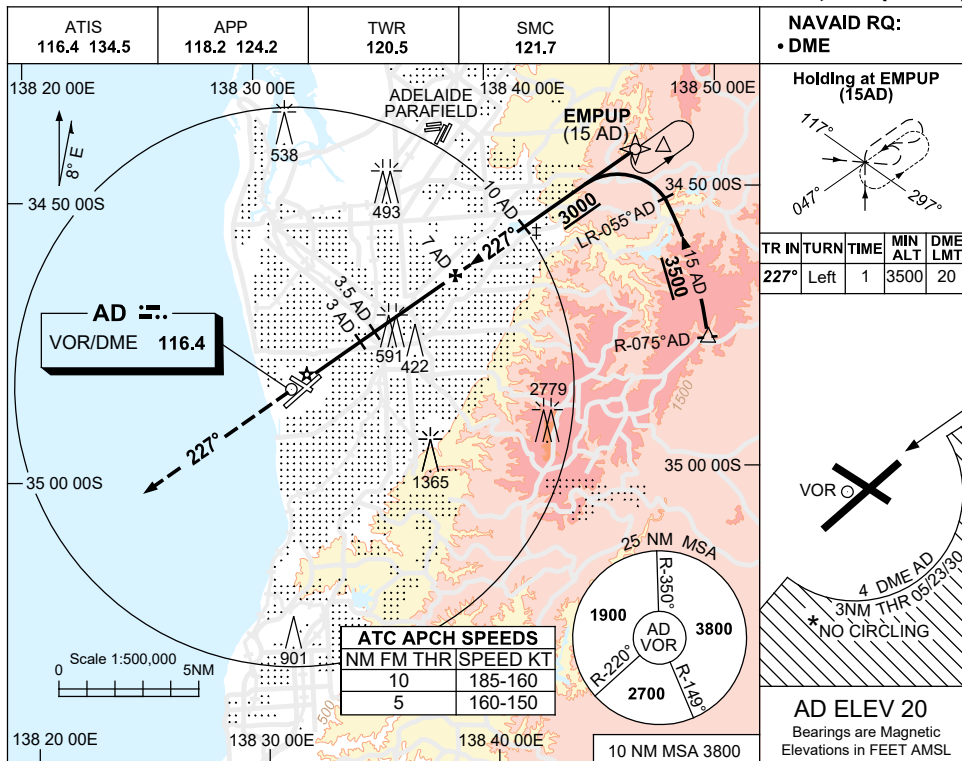


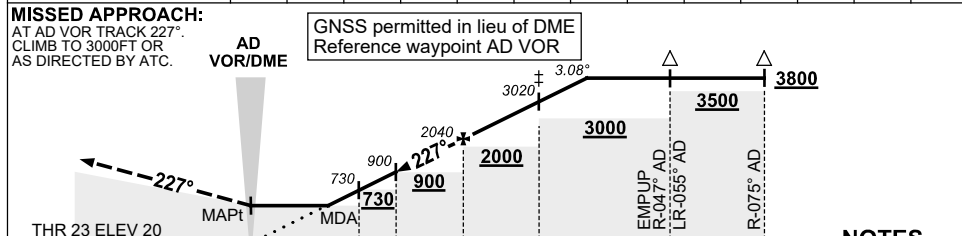
USE QNH

VOR RWY 23
ADELAIDE, SA (YPAD)

13 JUN 2024



DIST TO AD DME	2.5	3	3.5	4	5	6	7	8	9	10	11	12	12.4
ALT (3.08° APCH PATH)	580	730	900	1060	1390	1710	2040	2370	2690	3020	3350	3670	3800



- NO CIRCLING S OF RWY 05/23 BEYOND 4 DME AD OR BEYOND 3NM FM THR 05/23/30.
- SPECIAL ALTN MNM 850/4.0KM.
- ACFT MAY BE RADAR VECTORED TO 10 DME FINAL.
- APCH PATH ANGLE DOES NOT COINCIDE WITH PAPI ON GLIDE SLOPE INDICATION.
- COLOR: SEE SPEC NOTICES.

CATEGORY	A	B	C	D
S-I VOR/DME	580 (560-2.3)			
CIRCLING *	900 (880-2.4)		1000 (980-4.0)	1000 (980-5.0)
ALTERNATE*	(1380-4.4)		(1480-6.0)	(1480-7.0)

Changes: EMPUP REPLACES COOKY.

PADVO04-179