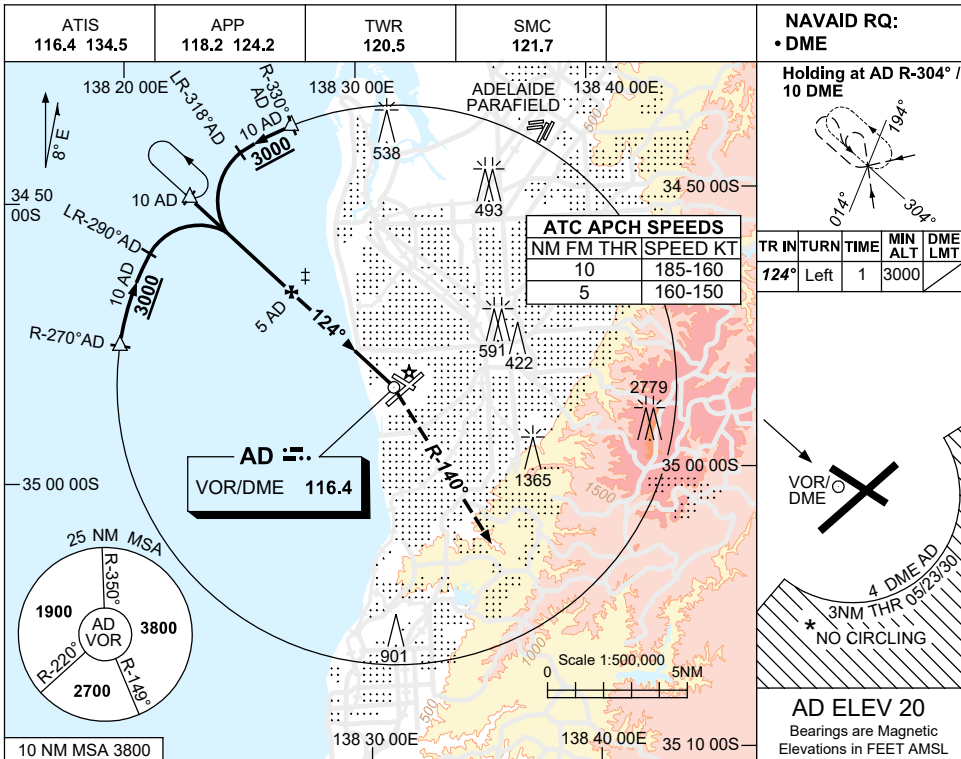


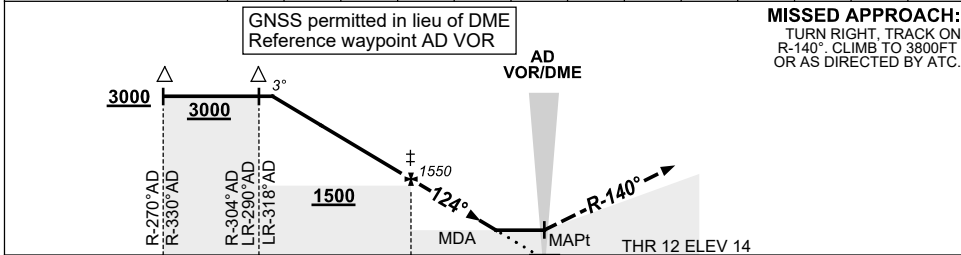
USE QNH

VOR RWY 12  
ADELAIDE, SA (YPAD)

24 MAR 2022



DIST TO AD DME	9.6	9	8	7	6	5	4	3	2	1.6	1.5		
ALT ( 3° APCH PATH )	3000	2830	2510	2190	1870	1550	1230	910	600	470	450		



**NOTES**

- \* 1. NO CIRCLING S OF RWY 05/23 BEYOND 4 DME AD OR BEYOND 3NM FM THR 05/23/30.
- \* 2. SPECIAL ALTN MNM 850/4.0KM.
- † 3. ACFT MAY BE RADAR VECTORED TO FNA.
- 4. COLOUR: SEE SPEC NOTICES.

CATEGORY	A	B	C	D
S-I VOR/DME		450 (430-2.4)		470 (450-2.5)
CIRCLING *	900 (880-2.4)		1000 (980-4.0)	1000 (980-5.0)
ALTERNATE †	(1380-4.4)		(1480-6.0)	(1480-7.0)

Changes: HOLDING TEXT.

PADVO03-170