

**STANDARD INSTRUMENT ARRIVAL (STAR)  
INTOG ONE X-RAY ARRIVAL (RNAV)  
ADELAIDE, SA (YPAD)**

**28 NOV 2024**

|                     |              |              |              |                                                  |
|---------------------|--------------|--------------|--------------|--------------------------------------------------|
| ATIS<br>116.4 134.5 | APP<br>118.2 | TWR<br>120.5 | SMC<br>121.7 | Bearings are Magnetic<br>Elevations in FEET AMSL |
|---------------------|--------------|--------------|--------------|--------------------------------------------------|

NOT TO SCALE

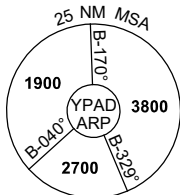


**SPEED  
MAX IAS 250KT  
BELOW 10,000ft**

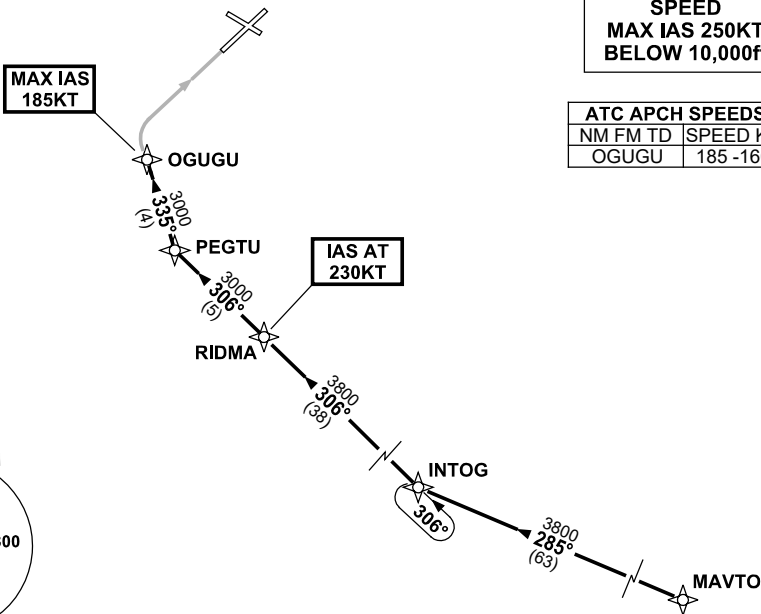
| ATC APCH SPEEDS |                |
|-----------------|----------------|
| NM              | FM TD SPEED KT |
| OGUGU           | 185 -160       |

**MAX IAS  
185KT**

**IAS AT  
230KT**



10 NM MSA 3800



**TRANSITION:**

**MAVTO:** From MAVTO track 285° to INTOG  
Then follow ARRIVAL instructions

**ARRIVAL: INTOG ONE**

**RWY 05 XRAY:**

- From INTOG turn RIGHT, track 306° to RIDMA  
**IAS AT 230KT** from RIDMA
- Track 306° to PEGTU
- Turn RIGHT, track 335° to OGUGU  
**MAX IAS 185KT** from OGUGU
- Track via RNP X RWY 05 (AR)

**COMMUNICATIONS FAILURE: PROCEDURE IN IMC  
IF ABLE CTC AD APP 03-9235-2012**

- Squawk 7600, comply with vertical navigation requirements, but not below MSA.
- Track via the latest STAR clearance to the nominated runway, then fly the most suitable approach in accordance with ERSA EMERG Section 1.5.

Changes: WAYPOINT NAMES, PROC IDENT.

PADSR33-181