

**STANDARD INSTRUMENT ARRIVAL (STAR)
RAYNA THREE VICTOR ARRIVAL (RNAV)
ADELAIDE, SA (YPAD)**

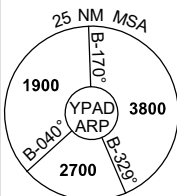
28 NOV 2024

ATIS 116.4 134.5	APP 128.6	TWR 120.5	SMC 121.7	Bearings are Magnetic Elevations in FEET AMSL
---------------------	--------------	--------------	--------------	--

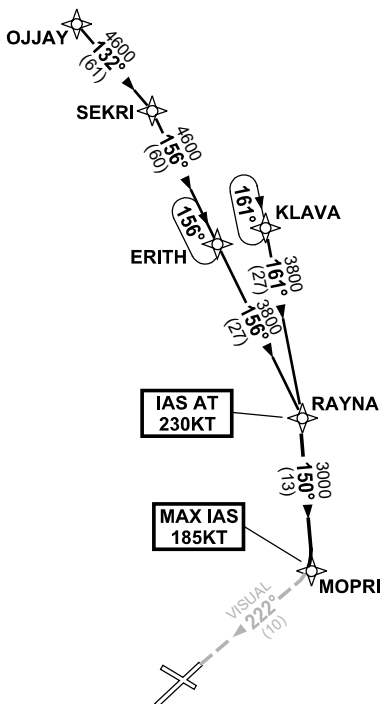
NOT TO SCALE



ATC APCH SPEEDS	
NM FM TD	SPEED KT
MOPRI	185 -160
5	160 -150



10 NM MSA 3800



**SPEED
MAX IAS 250KT
BELOW 10,000ft**

**IAS AT
230KT**

**MAX IAS
185KT**

TRANSITIONS:

OJJAY: **From OJJAY to RAYNA**
Track 132° to SEKRI
Turn RIGHT, track 156° to ERITH
Track 156° RAYNA
Then follow ARRIVAL instructions

KLAVA: **From KLAVA to RAYNA**
Track 161° to RAYNA
Then follow ARRIVAL instructions

ARRIVAL: RAYNA THREE

RWY 23 VICTOR: (HJ ONLY)
IAS AT 230KT from RAYNA
• From RAYNA track 150° to MOPRI
MAX IAS 185KT from MOPRI
• Turn RIGHT, track VISUAL for final RWY 23

**COMMUNICATIONS FAILURE: PROCEDURE IN IMC
IF ABLE CTC AD APP 03-9235-2012**

- Squawk 7600, comply with vertical navigation requirements, but not below MSA.
- Track via the latest STAR clearance to the nominated runway, then fly the most suitable approach in accordance with ERSA EMERG Section 1.5.

Changes: WAYPOINT NAME, VALIDITY INDICATOR.

PADSR31-181