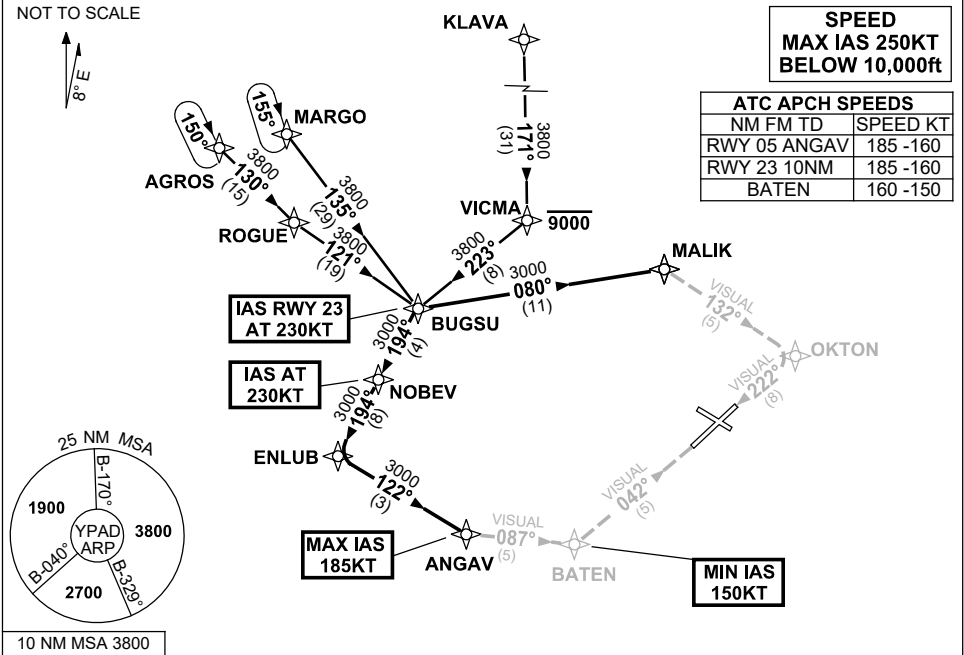


**STANDARD INSTRUMENT ARRIVAL (STAR)
BUGSU ONE VICTOR ARRIVAL (RNAV)
ADELAIDE, SA (YPAD)**

28 NOV 2024

ATIS 116.4 134.5	APP 124.2	TWR 120.5	SMC 121.7	Bearings are Magnetic Elevations in FEET AMSL
---------------------	--------------	--------------	--------------	--



TRANSITIONS:

<p>MARGO: From MARGO to BUGSU: Track 135° to BUGSU Then follow ARRIVAL instructions</p> <p>KLAVA: From KLAVA to BUGSU: Track 171° to VICMA Cross VICMA AT or BLW 9000FT Turn RIGHT, track 223° to BUGSU Then follow ARRIVAL instructions</p>	<p>AGROS: From AGROS to BUGSU: Track 130° to ROGUE Turn LEFT, track 121° to BUGSU Then follow ARRIVAL instructions</p>
--	---

ARRIVAL: BUGSU ONE

RWY 05 VICTOR:

- From BUGSU turn RIGHT, track 194° to NOBEV
- IAS AT 230KT from NOBEV
- Track 194° to ENLUB
- Turn LEFT, track 122° to ANGAV
- MAX IAS 185KT from ANGAV
- Turn LEFT, track 087° VISUAL to BATEN
- MIN IAS 150KT from BATEN
- Turn LEFT, intercept VISUAL final RWY 05

RWY 23 VICTOR: (HJ ONLY)

- IAS AT 230KT from BUGSU
- From BUGSU turn LEFT, track 080° to MALIK
- Turn RIGHT, track 132° VISUAL to OKTON
- Turn RIGHT, intercept VISUAL final RWY 23

**COMMUNICATIONS FAILURE: PROCEDURE IN IMC
IF ABLE CTC AD APP 03-9235-2012**

- Squawk 7600, comply with vertical navigation requirements, but not below MSA.
- Track via the latest STAR clearance to the nominated runway, then fly the most suitable approach in accordance with ERSA EMERG Section 1.5.

Changes: WAYPOINT NAMES, PROC IDENT. PADSR30-181