

**STANDARD INSTRUMENT ARRIVAL (STAR)
KAKLU ONE VICTOR ARRIVAL (RNAV)
ADELAIDE, SA (YPAD)**

28 NOV 2024

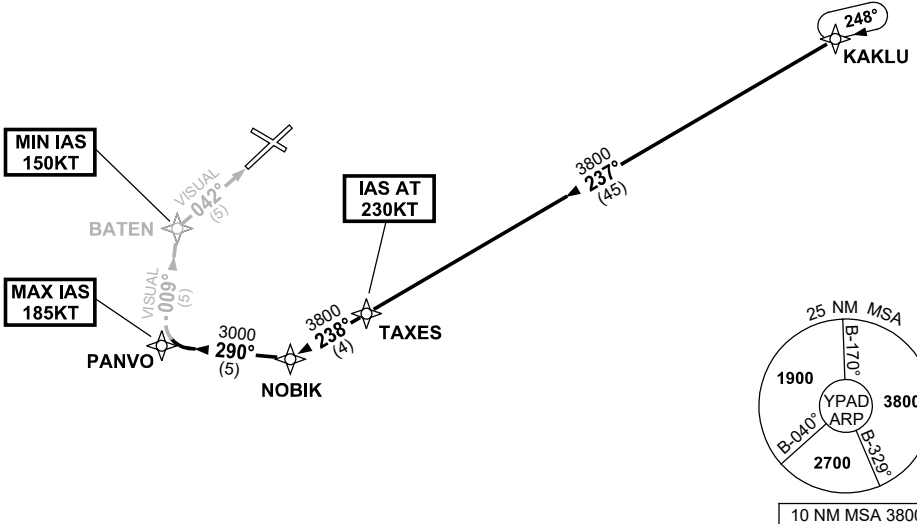
ATIS 116.4 134.5	APP (SE) 118.2	TWR 120.5	Bearings are Magnetic Elevations in FEET AMSL
---------------------	-------------------	--------------	--

NOT TO SCALE



ATC APCH SPEEDS	
NM FM TD	SPEED KT
PANVO	185 -160
BATEN	160 -150

**SPEED
MAX IAS 250KT
BELOW 10,000ft**



ARRIVAL: KAKLU ONE

RWY 05 VICTOR:

- From KAKLU track 237° to TAXES
IAS AT 230KT from TAXES
- Track 238° to NOBIK
- Turn RIGHT, track 290° to PANVO
MAX IAS 185KT from PANVO
- Turn RIGHT, track 009° VISUAL to BATEN
MIN IAS 150KT from BATEN
- Turn RIGHT, intercept VISUAL final RWY 05

**COMMUNICATIONS FAILURE: PROCEDURE IN IMC
IF ABLE CTC AD APP 03-9235-2012**

- Squawk 7600, comply with vertical navigation requirements, but not below MSA.
- Track via the latest STAR clearance to the nominated runway, then fly the most suitable approach in accordance with ERSA EMERG Section 1.5.

Changes: WAYPOINT NAMES, PROC IDENT.

PADSR27-181