

**STANDARD INSTRUMENT ARRIVAL (STAR)  
KAKLU ONE X-RAY ARRIVAL (RNAV)  
ADELAIDE, SA (YPAD)**

**28 NOV 2024**

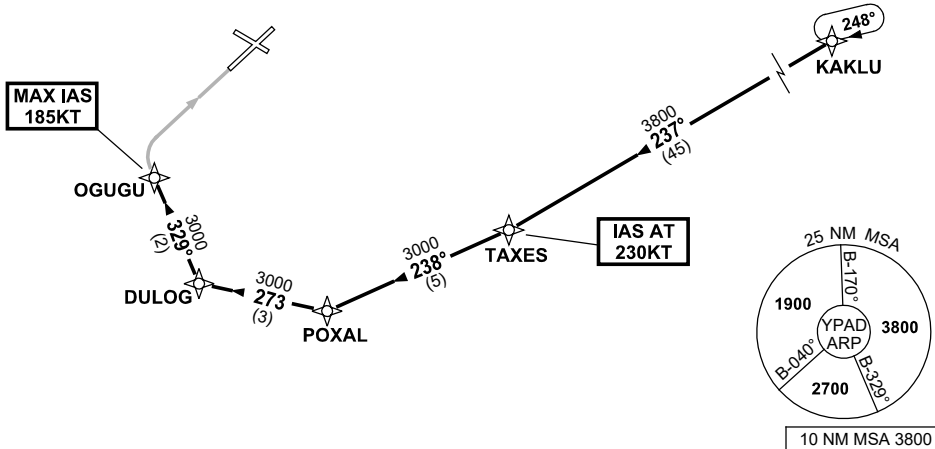
ATIS 116.4 134.5	APP (SE) 118.2	TWR 120.5	Bearings are Magnetic Elevations in FEET AMSL
---------------------	-------------------	--------------	--

NOT TO SCALE



ATC APCH SPEEDS	
NM FM TD	SPEED KT
OGUGU	185 -160

**SPEED  
MAX IAS 250KT  
BELOW 10,000ft**



**ARRIVAL: KAKLU ONE**

**RWY 05 XRAY:**

- From KAKLU track 237° to TAXES  
**IAS AT 230KT** from TAXES
- Track 238° to POXAL
- Turn RIGHT, track 273° to DULOG
- Turn RIGHT, track 329° to OGUGU  
MAX IAS 185KT from OGUGU
- Track via RNP X RWY 05 (AR)

**COMMUNICATIONS FAILURE: PROCEDURE IN IMC  
IF ABLE CTC AD APP 03-9235-2012**

- Squawk 7600, comply with vertical navigation requirements, but not below MSA.
- Track via the latest STAR clearance to the nominated runway, then fly the most suitable approach in accordance with ERS A EMERG Section 1.5.

Changes: WAYPOINT NAMES, PROC IDENT.

PADSR24-181