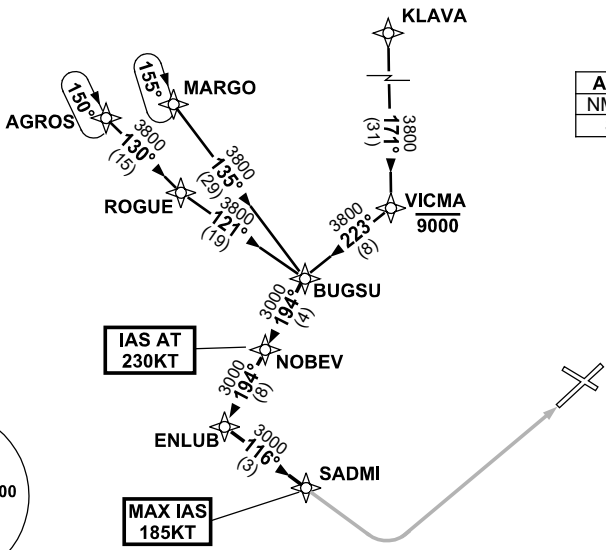


**STANDARD INSTRUMENT ARRIVAL (STAR)  
BUGSU ONE WHISKEY ARRIVAL (RNAV)  
ADELAIDE, SA (YPAD)**

**28 NOV 2024**

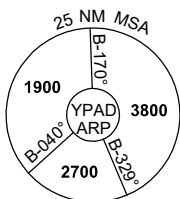
ATIS 116.4 134.5	APP 124.2	TWR 120.5	SMC 121.7	Bearings are Magnetic Elevations in FEET AMSL
---------------------	--------------	--------------	--------------	--

NOT TO SCALE



**SPEED  
MAX IAS 250KT  
BELOW 10,000ft**

ATC APCH SPEEDS			
NM	FM	TD	SPEED KT
			SADMI 185 -160



10 NM MSA 3800

**TRANSITIONS:**

**MARGO:** From MARGO to BUGSU:  
Track 135° to BUGSU  
Then follow ARRIVAL instructions

**KLAVA:** From KLAVA to BUGSU:  
Track 171° to VICMA  
Cross VICMA AT or BLW 9000FT  
Turn RIGHT, track 223° to BUGSU  
Then follow ARRIVAL instructions

**AGROS:** From AGROS to BUGSU:  
Track 130° to ROGUE  
Turn LEFT, track 121° to BUGSU  
Then follow ARRIVAL instructions

**ARRIVAL: BUGSU ONE**

**RWY 05 WHISKEY:**

- From BUGSU turn RIGHT, track 194° to NOBEV  
IAS AT 230KT from NOBEV
- Track 194° to ENLUB
- From ENLUB turn LEFT, track 116° to SADMI  
MAX IAS 185KT from SADMI
- Track via RNP W RWY 05 (AR)

**COMMUNICATIONS FAILURE: PROCEDURE IN IMC  
IF ABLE CTC AD APP 03-9235-2012**

- Squawk 7600, comply with vertical navigation requirements, but not below MSA.
- Track via the latest STAR clearance to the nominated runway, then fly the most suitable approach in accordance with ERSA EMERG Section 1.5.

Changes: WAYPOINT NAMES, PROC IDENT.

PADSR20-181

