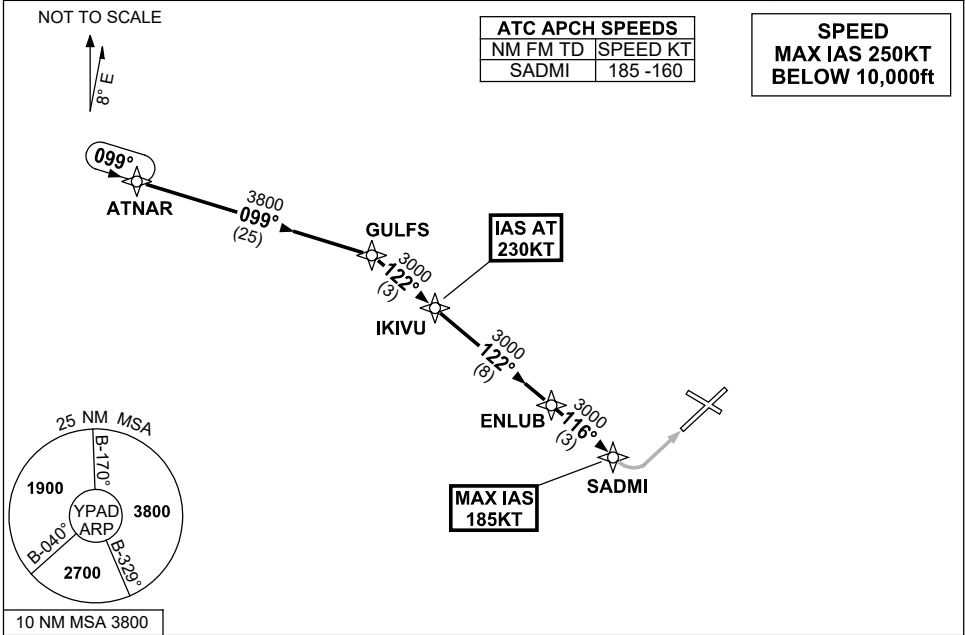


**STANDARD INSTRUMENT ARRIVAL (STAR)
ATNAR ONE WHISKEY ARRIVALS (RNAV)
ADELAIDE, SA (YPAD)**

28 NOV 2024

ATIS 116.4 134.5	APP 124.2	TWR 120.5	SMC 121.7	Bearings are Magnetic Elevations in FEET AMSL
---------------------	--------------	--------------	--------------	--



ARRIVAL: ATNAR ONE

RWY 05 WHISKEY:

- Track 099° to GULFS
- Turn RIGHT, track 122° to IKIVU
- **IAS AT 230KT** from IKIVU
- Track 122° to ENLUB
- From ENLUB turn LEFT track 116° to SADMI
- **MAX IAS 185KT** from SADMI
- Track via RNP W RWY 05 (AR)

**COMMUNICATIONS FAILURE: PROCEDURE IN IMC
IF ABLE CTC AD APP 03-9235-2012**

- Squawk 7600, comply with vertical navigation requirements, but not below MSA.
- Track via the latest STAR clearance to the nominated runway, then fly the most suitable approach in accordance with ERS A EMERG Section 1.5.

Changes: WAYPOINT NAMES, PROC IDENT.

PADSR18-181